



2022 ELECTRIC WELDING

PRODUCTS
FOR MIG/MAG/TIG
WELDING
MANUAL PLASMA
TORCHES
AND MMA WELDING



40
1982/2022

WE HAVE BEEN PUTTING OUR VALUES INTO EVERY PRODUCT FOR 40 YEARS...

SECTORAL SPECIALIZATION AS A DISTINCTIVE CHOICE

Since its origins, Oxyturbo has decided to deal in a specialized way with technological solutions in the field of pressure reducers and for the use of industrial gases in cylinders. A distinctive choice, which has allowed us to gain unparalleled experience on the international market. Oxyturbo is recognized as the company that offers the widest range of products, with solutions targeted to the needs of individual fields of use and users.

QUALITY TRACED AND CERTIFIED FOR THE SAFETY OF EACH CUSTOMER

Markets are often dominated by uncertainty about the real quality of the offer and exasperated competitiveness is transformed for the customer from an advantage into a risk. In this situation Oxyturbo immediately decided to favor certain and certified quality. It is no coincidence that the ISO 9001 certification was acquired 25 years ago. A certainty flanked by a brand that emphasizes the authenticity of what is "signed by Oxyturbo" and by a traceability system that assigns a specific "manufacturing memory" to each product.

A GREAT EXPERIENCE AT THE SERVICE OF TECHNOLOGICAL INNOVATION

During 40 years of company history, Oxyturbo has been the architect of significant technological innovations. It has made important steps forward in the sector in which it operates, both in terms of functional efficiency of the proposals, and in terms of safety, reliability, durability and also environmental sustainability. Particular attention is also paid to ensure that innovations are never at the expense of practicality of use.



COLLABORATIVE SKILLS TO BE A PARTNER AS WELL AS A SUPPLIER

Among the growth factors that have promoted Oxyturbo's business over the years, a decisive component has been the ability to be a proactive and available interlocutor beyond the supply of products. A competent and available partner, capable of listening to the customer's needs, interpreting them and therefore giving answers that participate in the success of development projects. A versatility that arises from being a company still led with passion by the entrepreneurial family that was its founder.

INTEGRATED LOGISTICS TO ENSURE COMPLIANCE WITH DELIVERIES

Oxyturbo is able to guarantee a wide and continuous availability of its products, in their original packaging, to give timely responses to increasingly dynamic markets in terms of orders and supply needs. The value of this organizational capacity of Oxyturbo logistics has become even more evident in contemporary markets, dominated by increasing difficulties in finding raw materials. The 4.0 structure of Oxyturbo logistics is able to keep the expected dynamics active, both in terms of quantity, types and delivery times.

THE WIDEST AND MOST UPDATED RANGE ON THE MARKET

The synergy between the Research & Development department and the various production units within the company, structures a range of offers which place Oxyturbo as the main reference in its sector at an international level. The ability to translate projects into solutions, as well as the possibility of maintaining high production flows under a quality regime, comes from a technological equipment that configures Oxyturbo as a 4.0 company. Oxyturbo has a "smart manufacturing" vocation, regarding both the robotic work islands and the digital controls of each single piece and in the various reference parameters: materials, assemblies, finishes.





DIRECT LINE WITH OXYTURBO

Consultation and dialogue are fundamental components for Oxyturbo. It's this customer-oriented focus that really differentiates Oxyturbo. The company has developed an efficient telephone and on-line support service, managed by experienced staff, able to offer valuable technical and technical-commercial responses to quickly address specific needs, or provide useful information to employ the most appropriate specialists for the problem at hand.

GENERAL CONDITIONS OF SALE



TRANSPORT

Though shipped carriage paid, goods are always at the customer's own risk. Any claims for damages due either to transport or non-compliance with the order must be made in writing and within 8 days of receipt.



DELIVERIES

The terms confirmed by our sales office are indicative and any delays shall not originate any claims for damages or cancellation of the order. At its sole discretion, the seller may postpone the delivery of part of the order without prior notice to the buyer.



WARRANTY

The warranty is 24 months from delivery on all our products except for our pressure reducers, whose warranty is for 36 months. The warranty covers any manufacturing defects other than those resulting from normal wear, misuse or incorrect use.



RETURNS AND REPAIRS

To provide better service to our customers, any returns outside the warranty period will also be taken into consideration, subject to agreement with our sales department which, having ascertained the nature of the defect, will proceed with preventively approving the ex-factory return. Upon proof of receipt, the cost for the repair will be communicated and will be returned at the customer's expense.



RETURNS DUE TO ORDERING ERRORS

In the event that the customer wishes to return goods that were ordered erroneously, they must apply to our sales office within 5 days of receipt of the goods. The return is ex-works and will be subject to a credit of 80% of the value of the goods, as the return to Oxyturbo will have to be subjected to a quality control and correct re-packaging for customers who shall repurchase the product.



EACH OF OUR PRODUCTS IS SUPPLIED WITH EAN CODE

to facilitate their retail.



PRODUCT INDEX

ELECTRIC WELDING

MIG/MAG WELDING

BZ 15 TORCH	8
BZ 25 TORCH	10
BZ 36 TORCH	12
BZ 240 TORCH	14
BZ 501 TORCH	16
BZ 551 TORCH	19
BZ TORCHES SPARE PARTS	21-22
TW 1 TORCH	23
TW 2 TORCH	25
TW 4 TORCH	27

TIG WELDING

WP9 – WP20 TORCHES	30
COMMON SPARE PARTS	31
WP17 – WP18 – WP26 TORCHES	34
COMMON SPARE PARTS	36
WP TORCHES SPARE PARTS	40
TUNGSTEN ELECTRODES	41

MANUAL PLASMA TORCHES

CB50 TORCHES	44
CB70 TORCHES	45
CB100 TORCHES	46
CB150 TORCHES	47
PLASMA POWER CABLES	48

MMA WELDING

INVERTER	50
COATED ELECTRODES	52

PPE AND ACCESSORIES

ELECTRONIC MASKS	56
HAND MASKS IN FIBRE	59
SPARE GLASSES	60
PPE AND ACCESSORIES FOR ELECTRIC WELDING	61
WELDING CABLES	64
ELECTRODE HOLDER CLAMPS AND GROUND TERMINALS	65
KIT GROUND TERMINAL AND CLAMP	67
CONNECTORS	67
WELDING SPRAY	68





Oxyturbo has extended its product range with the introduction of a new series of items and accessories for MIG/MAG welding. These products have been chosen, tested and guaranteed by Oxyturbo and meet customer needs for a range of low cost quality torches.

MIG/MAG WELDING

The MIG/MAG welding process is a continuous process in which the weld pool protection is guaranteed by a cover gas flowing from the torch onto the part to be welded. Being a continuous process ensures high productivity of the process itself, and at the same time the presence of gas allows for operation without scorching (both these features increase the affordability of the electrode welding process).

A MIG /MAG welding station must be composed of the following components:

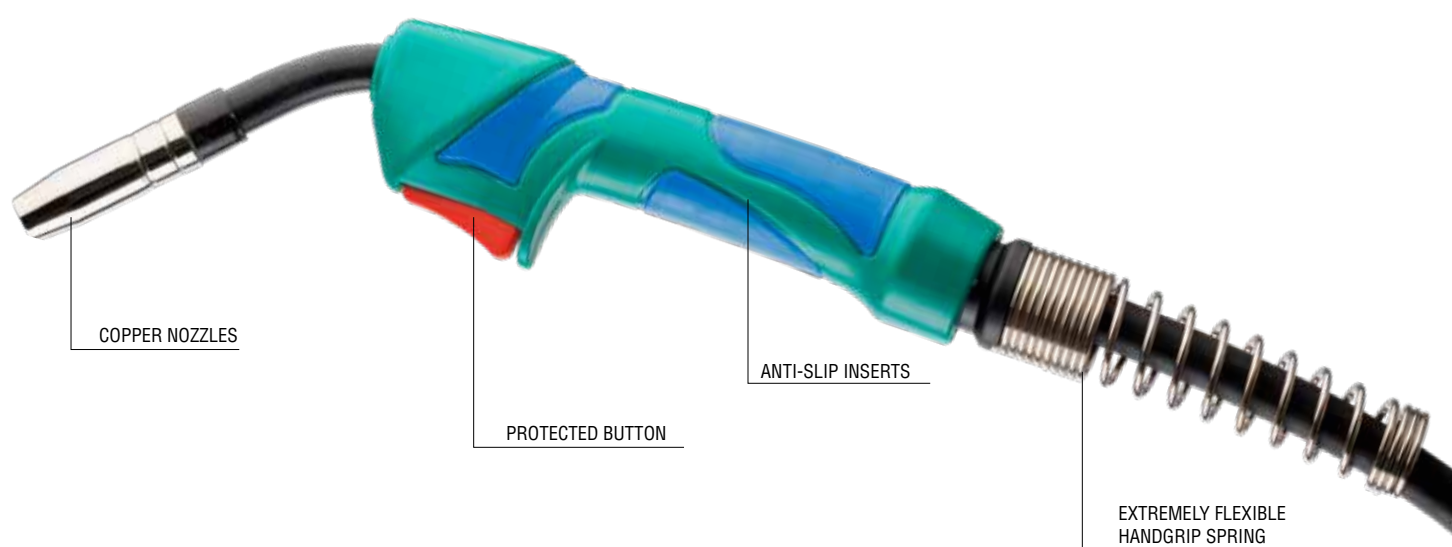
- **Dual-function torch: to form the arc between the wire and the piece and bring the protection gas on the weld pool**
- **Mass**
- **Arc current generator (in modern machines, the check of arc characteristics is carried out electronically)**
- **Feeding mechanism and check that the**
- **Reel wraps the**
- **Protection gas cylinder.**

MIG/MAG WELDING APPLICATIONS

MIG/MAG welding is used when high productivity and a high degree of flexibility are required. With this technology, it is possible to weld both austenitic and ferritic steels, light metal alloys (Al and Mg), copper alloys, nickel alloys and titanium alloys. Since the weld pool protection is guaranteed by a gas flow, this procedure is only recommended in workshops, as even moderate wind can cause dispersion of the gas flow with a resulting reduction in the quality of the welded joint. It is possible in some cases to work outside, making protective domes around the area to be welded.

BZ 15 TORCH

Compact, easy to handle torch with extraordinary technical features.



TECHNICAL FEATURES

Protective gas	CO ₂ or Mix
Voltage class	L
Cooling	Air
Wire diameter	0.6 – 0.8 – 1.0
Working cycle	60% 180A CO ₂ -150A Mix

A very lightweight torch with a new ergonomic bi-material handgrip for less fatigue and muscular load on the forearm, allowing better manoeuvrability during welding. The button is protected by an edge that prevents accidental ignition.

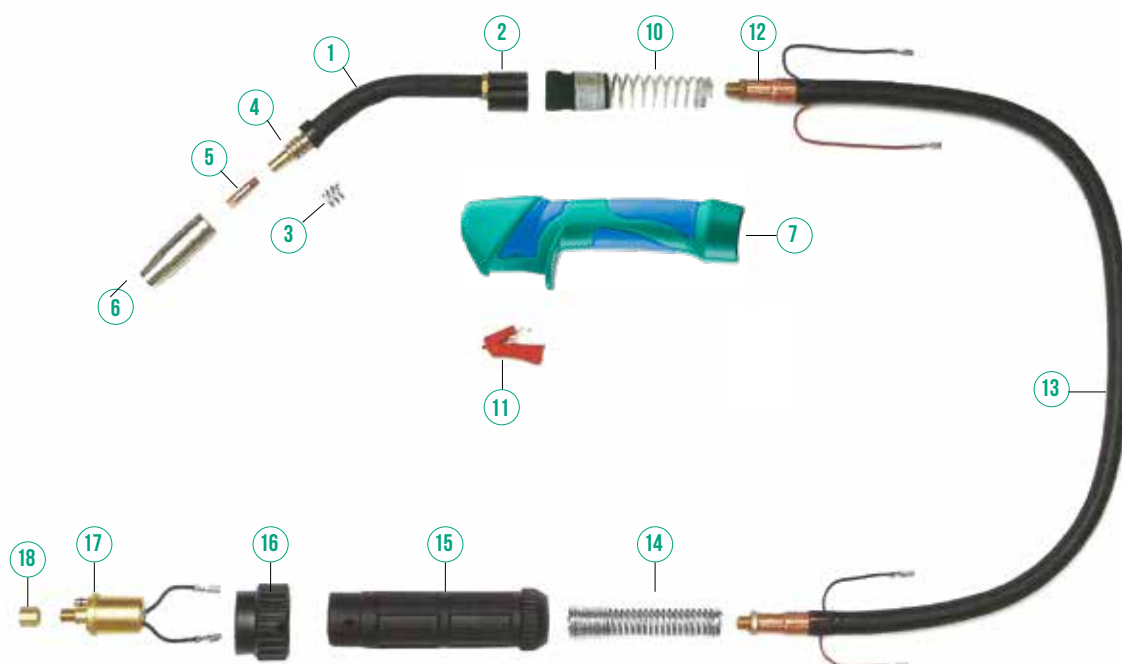
Available with 3 different cables measurements: 3 - 4 - 5 metres.

RECOMMENDED USE

Ideal for lightweight bodywork and semi-professional use, for steel, stainless steel and aluminium wires up to 0.8 mm in diameter.

CODE	Description	Weight (kg)	No.Pcs.
9T0200153SP	Mig Torch BZ 15 3 m	2.00	1
9T0200154SP	Mig Torch BZ 15 4 m	2.20	1
9T0200155SP	Mig Torch BZ 15 5 m	2.40	1

BZ 15 TORCH SPARE PARTS

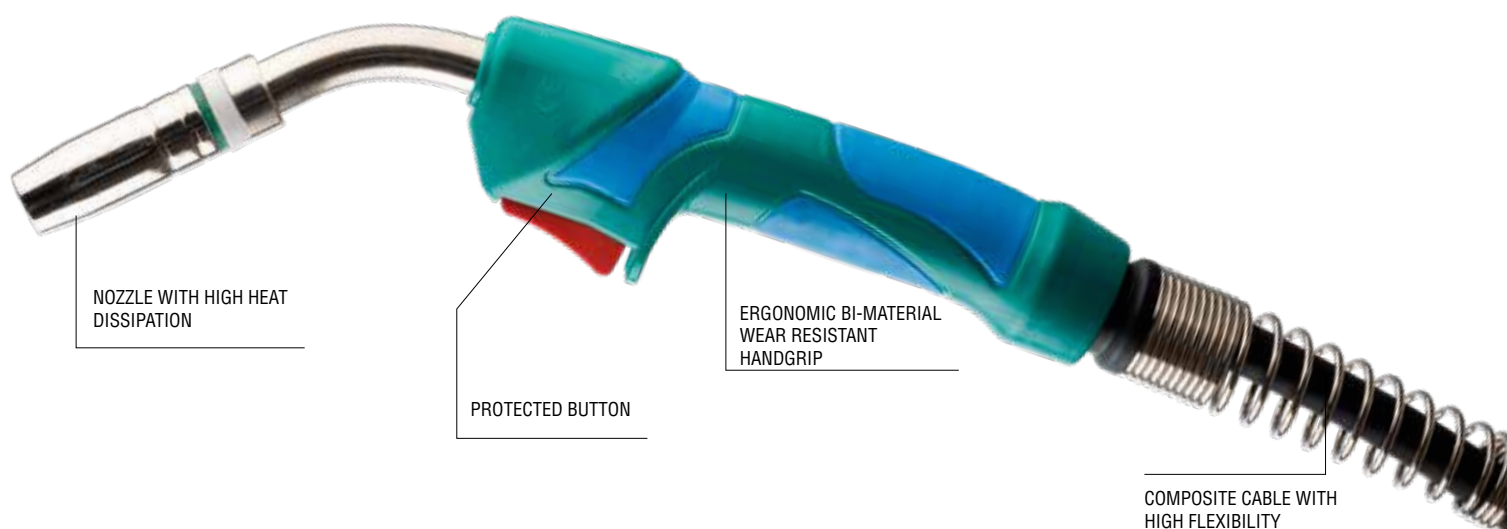


**INTERCHANGEABLE
SPARE PARTS AND
COMPATIBLE WITH
MAJOR EUROPEAN
MANUFACTURERS.**

CODE	Description	No.	No. Pcs.
9T020615IC	Complete adjustable swan neck BZ 15	1	1
9T021015C	Pvc torch body	2	1
9T02051501C	Spring	3	10
9T020515FC	Tip adaptor gas diffuser BZ 15	4	10
9T02011506C	Contact tip M6X25 Ø 0.6	5	20
9T02011508C	Contact tip M6X25 Ø 0.8	5	20
9T02011510C	Contact tip M6X25 Ø 1.0	5	20
9T02011512C	Contact tip M6X25 Ø 1.2	5	20
9T020215ICL	Nozzle Ø 16	6	10
9T020215ICOC	Adjustable conic nozzle Ø 12	6	10
9T0208ABZTT	Complete anatomic handle rubbered	7	1
9TEA321	Spring for handle	10	1
9T0209ABZ	Switch for anatomic handle	11	1
9TVAB1820	Sleeve 35 sq mm coax cable	12	10
9T0220153E	Coax cable 16mm² 3 m	13	1
9T0220154E	Coax cable 16mm² 4 m	13	1
9T0220155E	Coax cable 16mm² 5 m	13	1
9TEA331	Spring for small connector case	14	1
9TBW195	Small connector case	15	1
9T023004C	Nut for case	16	1
9T023005C	Euro connector w/bitt splice C	17	1
9T023006C	Liner nut	18	1

BZ 25 TORCH

Quality at a low cost.



TECHNICAL FEATURES

Protective gas	CO ₂ or Mix
Voltage class	L
Cooling	Air
Wire diameter	0.6 – 0.8 – 1.2
Working cycle	60% 250A CO ₂ -220A Mix

A torch that offers an excellent performance level with good value for money. The button is protected by an edge that prevents accidental ignition.

Available with 3 different cables measurements: 3 - 4 - 5 metres.

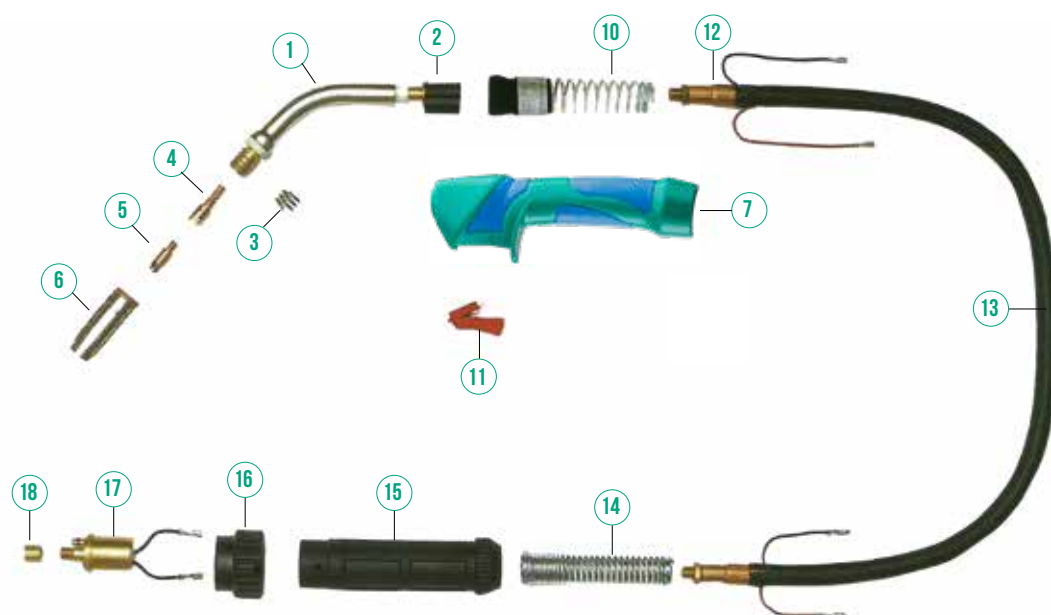
RECOMMENDED USE

Ideal for lightweight bodywork and light carpentry use, for steel, stainless steel and aluminium wires up to 1.0 mm in diameter.

CODE	Description	Weight (kg)	No.Pcs.
9T0200253SP	Mig Torch BZ 25 3 m	2.40	1
9T0200254SP	Mig Torch BZ 25 4 m	2.60	1
9T0200255SP	Mig Torch BZ 25 5 m	2.80	1

BZ 25 TORCH SPARE PARTS

INTERCHANGEABLE
SPARE PARTS AND
COMPATIBLE WITH
MAJOR EUROPEAN
MANUFACTURERS.



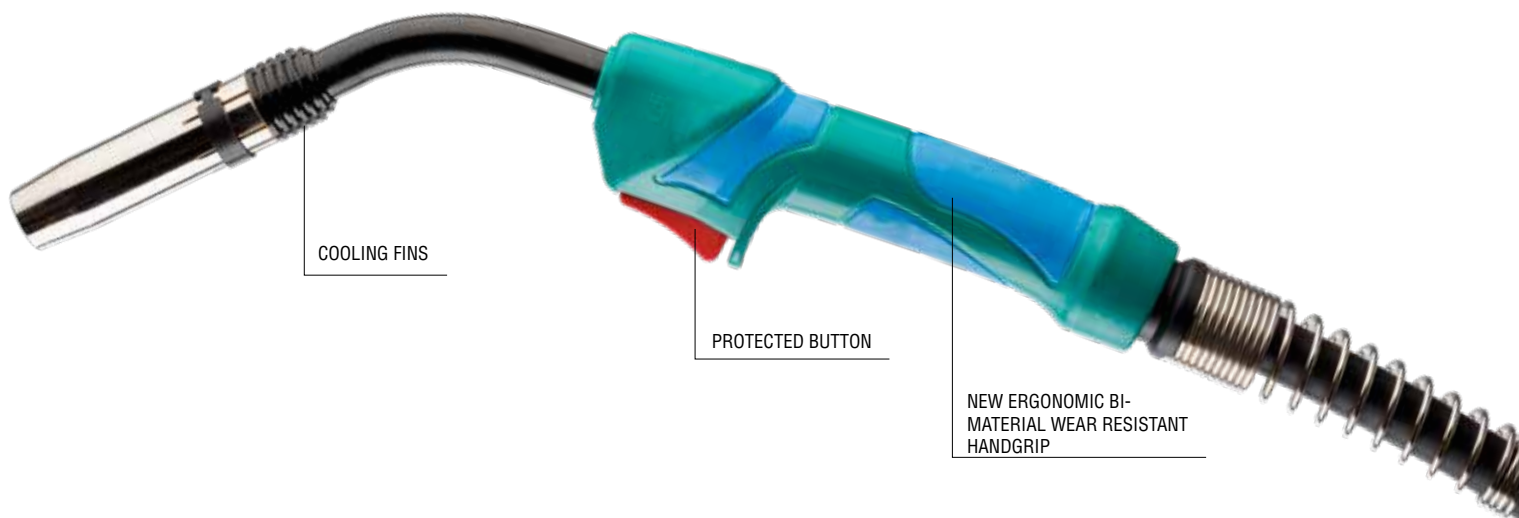
CODE	Description	No.	No.Pcs.
9T020625C	Complete adjustable swan neck BZ 25	1	1
9T021015C	Pvc torch body	2	1
9T02052501C	Spring	3	10
9T020525C	Tip adaptor gas diffuser BZ 25	4	10
9T02012506C	Contact tip M6x28 ø 0.6	5	20
9T02012508C	Contact tip M6x28 ø 0.8	5	20
9T02012510C	Contact tip M6x28 ø 1.0	5	20
9T02012512C	Contact tip M6x28 ø 1.2	5	20
9T02012506H	Contact tip M6x28 ø 0.6 Cucrzr	5	10
9T02012508H	Contact tip M6x28 ø 0.8 Cucrzr	5	10
9T02012510H	Contact tip M6x28 ø 1.0 Cucrzr	5	10
9T02012512H	Contact tip M6x28 ø 1.2 Cucrzr	5	10
9T020225CLC	Nozzle Ø 16	6	10
9T020225COC	Adjustable conic nozzle Ø 15	6	10
9T0208ABZTT	Complete anatomic handle rubbered	7	1
9TEA321	Spring for handle	10	1
9T0209ABZ	Switch for anatomic handle	11	1
9TVAB1820	Sleeve 35 SQ mm coax cable	12	10
9T0220253E	Coax cable 25 mm² 3 m	13	1
9T0220254E	Coax cable 25 mm² 4 m	13	1
9T0220255E	Coax cable 25mm² 5 m	13	1
9TEA331	Spring for small connector case	14	1
9TBW195	Small connector case	15	1
9T023004C	Nut for case	16	1
9T023005C	Euro connector w/bitt splice C	17	1
9T023006C	Liner nut	18	1



PROTECTED BUTTON

BZ 36 TORCH

Reliable, safe semi-professional tool.



TECHNICAL FEATURES

Protective gas	CO ₂ or Mix
Voltage class	L
Cooling	Air
Wire diameter	0.6 – 0.8 – 1.2 – 1.6
Working cycle	60% 360A CO ₂ -320A Mix

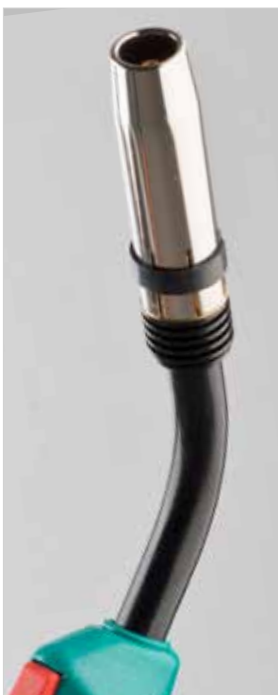
A low cost, quality torch. Components are interchangeable with standard major European manufacturers and are made with wear-resistant, thermally stable and long-lasting materials, ensuring excellent performance even for the most complex welding.

Available with 3 different cables measurements: 3 - 4 - 5 metres.

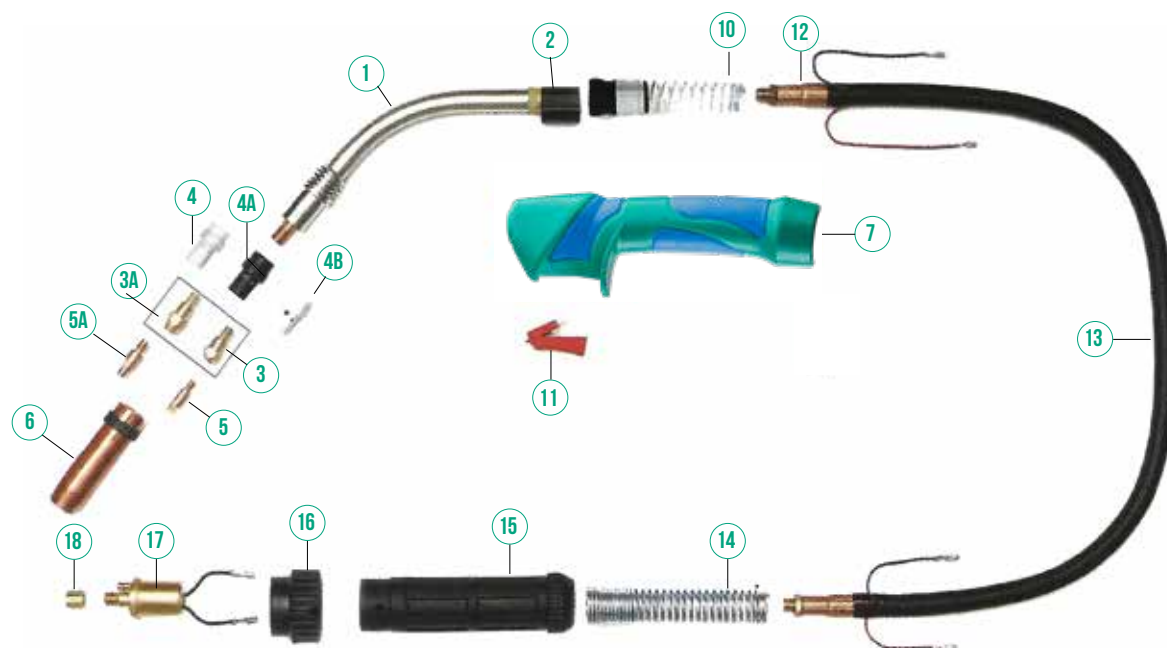
RECOMMENDED USE

Ideal for medium carpentry and industrial bodywork, for steel, stainless steel and aluminium wires up to 1.6 mm in diameter

CODE	Description	Weight (kg)	No.Pcs.
9T0200363SP	Mig Torch BZ 36 3 m	3.70	1
9T0200364SP	Mig Torch BZ 36 4 m	3.90	1
9T0200365SP	Mig Torch BZ 36 5 m	4.10	1



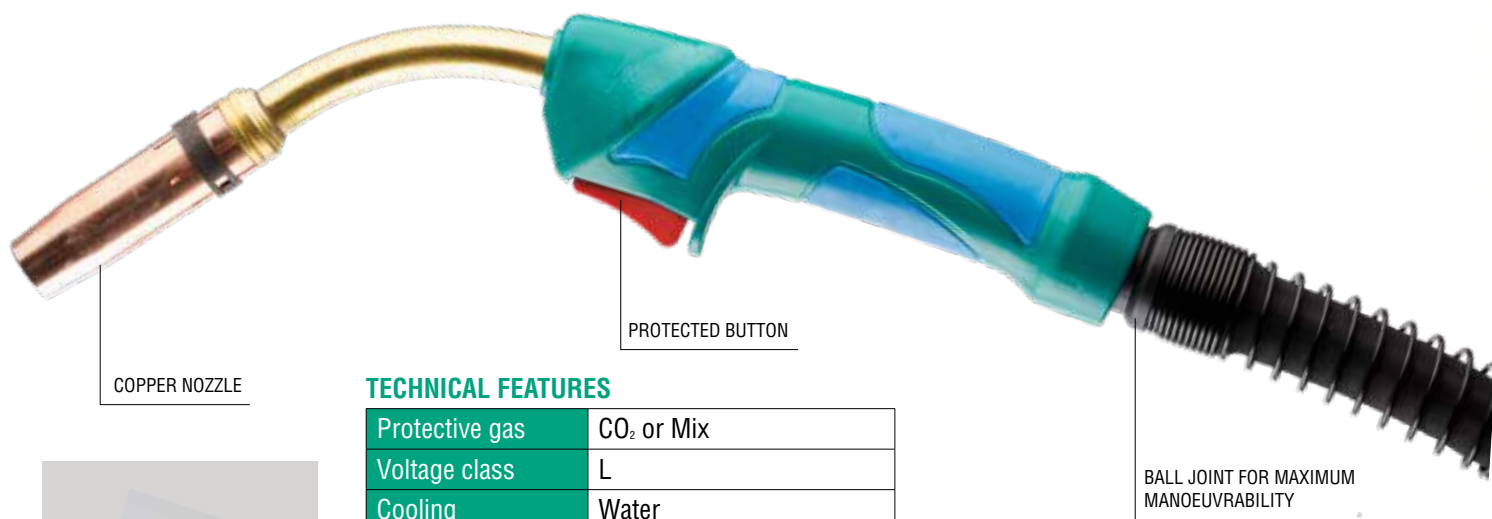
BZ 36 TORCH SPARE PARTS



CODE	Description	No.	No.Pcs.
9T020636C	Complete adjustable swan neck BZ 36	1	1
9T021015C	PVC Torch body for lance	2	1
9T020336M6C	Tip adaptor BZ 36 M6	3	10
9T020336M8C	Tip adaptor BZ 36 M8	3A	10
9T020536C	Gas diffuser BZ 36	4	50
9T020536CB	Black gas diffuser BZ 36	4A	50
9T020536CER	Ceramics gas diffuser BZ 36	4B	50
9T02012506C	Contact tip M6x28 ø 0.6	5	20
9T02012508C	Contact tip M6x28 ø 0.8	5	20
9T02012510C	Contact tip M6x28 ø 1.0	5	20
9T02012512C	Contact tip M6x28 ø 1.2	5	20
9T02012506H	Contact tip M6x28 ø 0.6 Cucrzr	5	10
9T02012508H	Contact tip M6x28 ø 0.8 Cucrzr	5	10
9T02012510H	Contact tip M6x28 ø 1.0 Cucrzr	5	10
9T02012512H	Contact tip M6x28 ø 1.2 Cucrzr	5	10
9T02012514H	Contact tip M6x28 ø 1.4 Cucrzr	5	10
9T02012516H	Contact tip M6x28 ø 1.6 Cucrzr	5	10
9T0201M83008C	Contact tip M8x30 ø 0.8	5A	20
9T0201M83010C	Contact tip M8x30 ø 1.0	5A	20
9T0201M83012C	Contact tip M8x30 ø 1.2	5A	20
9T0201M83014C	Contact tip M8x30 ø 1.4	5A	20
9T0201M83016C	Contact tip M8x30 ø 1.6	5A	20
9T0201M83008H	Contact tip M8x30 ø 0.8 Cucrzr	5A	10
9T0201M83010H	Contact tip M8x30 ø 1.0 Cucrzr	5A	10
9T0201M83012H	Contact tip M8x30 ø 1.2 Cucrzr	5A	10
9T0201M83014H	Contact tip M8x30 ø 1.4 Cucrzr	5A	10
9T0201M83016H	Contact tip M8x30 ø 1.6 Cucrzr	5A	10
9T020236CLC	Nozzle Ø 19	6	10
9T020236COC	Adjustable conic nozzle ø 16	6	10
9T0208ABZTT	Complete anatomic handle rubbered	7	1
9TEA321	Spring for handle	10	1
9T0209ABZ	Switch for anatomic handle	11	1
9TVAB2022CU2G	Sleeve coax cable	12	10
9T0220363E	Coax cable 50 mm² 3 m	13	1
9T0220364E	Coax cable 50 mm² 4 m	13	1
9T0220365E	Coax cable 50 mm² 5 m	13	1
9TEA311	Spring for small connector case	14	1
9TBW159	Big connector case	15	1
9T023004C	Nut for case	16	1
9T023005C	Euro connector w/bitt splice C	17	1
9T023006C	Liner nut	18	1

BZ 240 TORCH

A reliable, safe professional torch with excellent value for money.



TECHNICAL FEATURES

Protective gas	CO ₂ or Mix
Voltage class	L
Cooling	Water
Wire diameter	0.6 – 0.8 – 1.2
Working cycle	60% 300A CO ₂ -270A Mix

A torch with water cooling. Equipped with an ergonomic bi-material handgrip which makes it suitable for prolonged use without causing too much fatigue to operator forearms. Its light weight also makes it very manoeuvrable during welding operations. The button is protected by an edge that prevents accidental ignition.

Available with 3 different cables measurements: 3 - 4 - 5 metres.

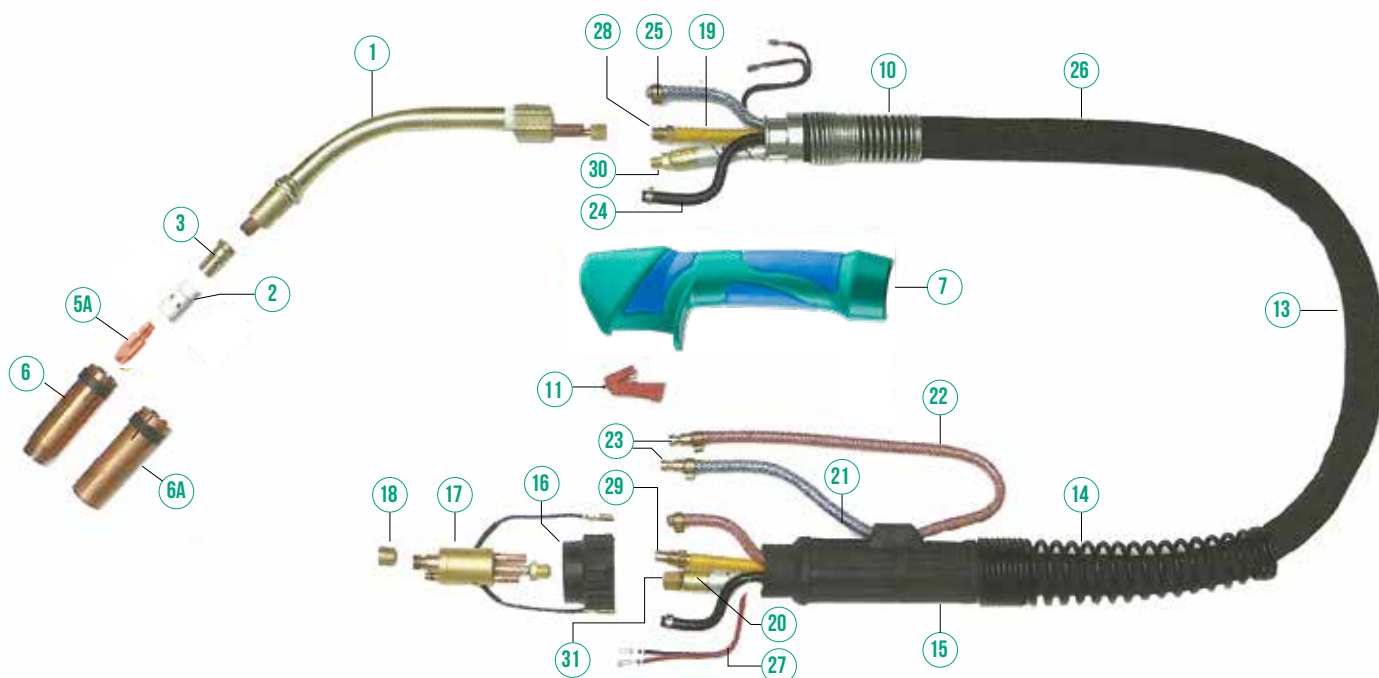
RECOMMENDED USE

Ideal for heavy carpentry, for steel wires up to 1.2 mm and for stainless steel and aluminium wires up to 1.6 mm in diameter.

CODE	Description	Weight (kg)	No.Pcs.
9T02002403SP	Mig Torch BZ 240 3 m	3.70	1
9T02002404SP	Mig Torch BZ 240 4 m	3.90	1
9T02002405SP	Mig Torch BZ 240 5 m	4.10	1

BZ 240 TORCH SPARE PARTS

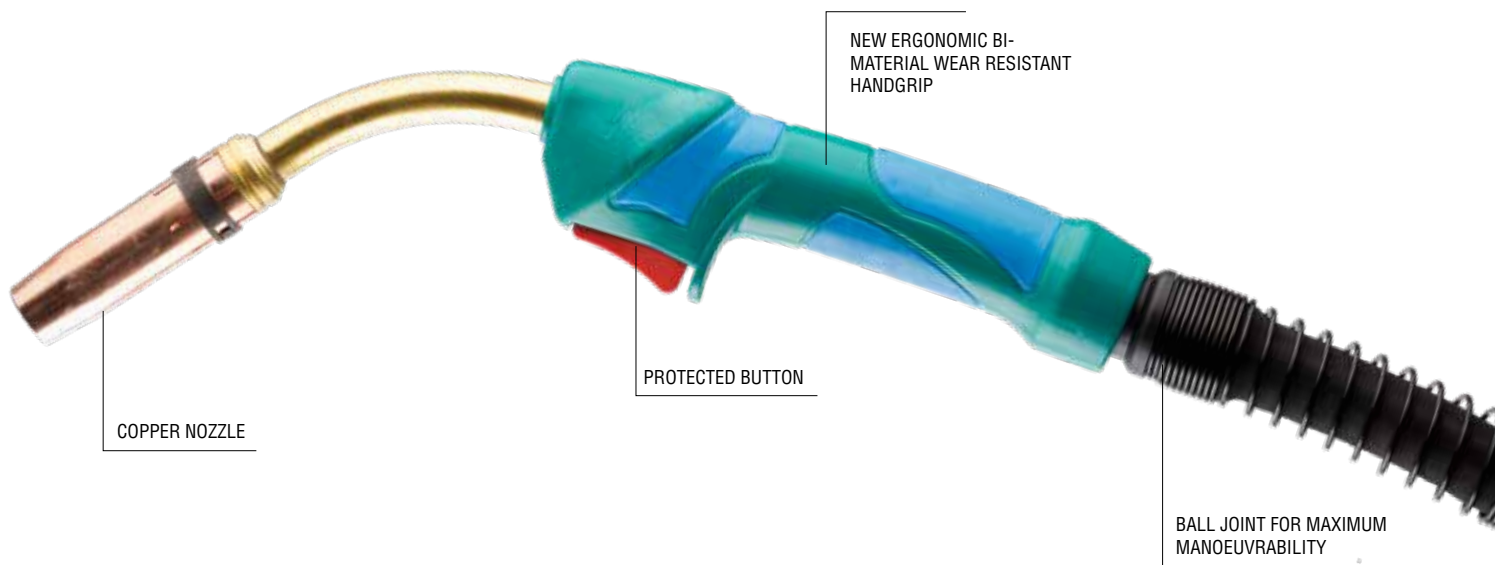
CODE	Description	No.	No.Pcs.
9T0206240	Complete adjustable swan neck BZ 240	1	1
9T020524C	Gas diffuser BZ 240	2	10
9T020336M6	Tip adaptor BZ 240 M6	3	10
9T02012506C	Contact tip M6x28 ø 0.6	5	20
9T02012508C	Contact tip M6x28 ø 0.8	5	20
9T02012510C	Contact tip M6x28 ø 1.0	5	20
9T02012512C	Contact tip M6x28 ø 1.2	5	20
9T02012506H	Contact tip M6x28 ø 0.6 CuCrZr	5A	10
9T02012508H	Contact tip M6x28 ø 0.8 CuCrZr	5A	10
9T02012510H	Contact tip M6x28 ø 1.0 CuCrZr	5A	10



CODE	Description	No.	No.Pcs.
9T02012512H	Contact tip M6x28 ø 1.2 Cucrzr	5A	10
9T02012514H	Contact tip M6x28 ø 1.4 Cucrzr	5A	10
9T02012516H	Contact tip M6x28 ø 1.6 Cucrzr	5A	10
9T020224COC	Adjustable conic nozzle ø 12.5	6	10
9T020224CLC	Adjustable cylindrical nozzle ø 17	6A	10
9T0209ABZ	Switch for anatomic handle	11	1
9T0208ABZTT	Complete anatomic handle rubbered	7	1
9T0208ER02	Screw for handle	-	1
9T02144ER15	Front junction for handle	-	1
9T02144M92	Spring for handle	10	1
9T02205013	Cable assembly cpl. 3 m	13	1
9T02205014	Cable assembly cpl. 4 m	13	1
9T02205015	Cable assembly cpl. 5 m	13	1
9T02245013GO	Rubber power cable 3 m for H ₂ O	19	1
9T02245014GO	Rubber power cable 4 m for H ₂ O	19	1
9T02215013	Rilsan wire conduit 3 m	20	1
9T02215014	Rilsan wire conduit 4 m	20	1
9T02215015	Rilsan wire conduit 5 m	20	1
9T0235501	Male quick connection H ₂ O	23	10
9TVAGH58BPVC	PVC hose 5x8 blue for H ₂ O	21	100
9TVAGH58B	Rubber hose 5x8 blue for H ₂ O	21	250
9TVAGH58RPVC	PVC hose 5x8 red for H ₂ O	22	100
9TVAGH58R	Rubber hose 5x8 red for H ₂ O	22	250
9T02305011	Clamp ø 9.5	25	100
9T02305012	Clamp ø 10.5	25	100
9T02305013	Clamp ø 8.7	25	100
9T02305014	Clamp ø 8.0	25	100
9TBW159	Big connector case	15	1
9TEA311	Spring for small connector case	14	1
9T023004C	Nut for case	16	1
9T0230501C	Euro connector w/bitt splice C	17	1
9T023006C	Liner nut	18	1
9TVAGH57NPVC	PVC hose 5x8 black for gas	24	100
9T0245F501C	Female fitting for p.c. BZ 501 C	31	1
9T0245M501C	Male fitting for p.c. BZ 501 C	30	1
9T02PG501A	Male fitting front rilsan wire con.	28	1
9T02PG501P	Male fitting back rilsan wire con.	29	1
9TVACVBP	Control wire	27	100
9TVAPR2528N	Canvas sheathing 25x28 N	26	40
9TVAPR2831N	Canvas sheathing 28x31 N	26	40
9TVAPR3032N	Canvas sheathing 30x32 N	26	40

BZ 501 TORCH

Professional torch with water cooling.
Excellent performance at a low price.



TECHNICAL FEATURES

Protective gas	CO ₂ or Mix
Voltage class	L
Cooling	Water
Wire diameter	0.6 – 0.8 – 1.2 – 1.6
Working cycle	60% 500A CO ₂ - 450A Mix



A torch that can provide excellent performance with good value for money. The ergonomic and lightweight handgrip allows excellent weight balancing and easy manoeuvrability without straining the user's hand too much. A special protective edge on the button prevents accidental ignition.

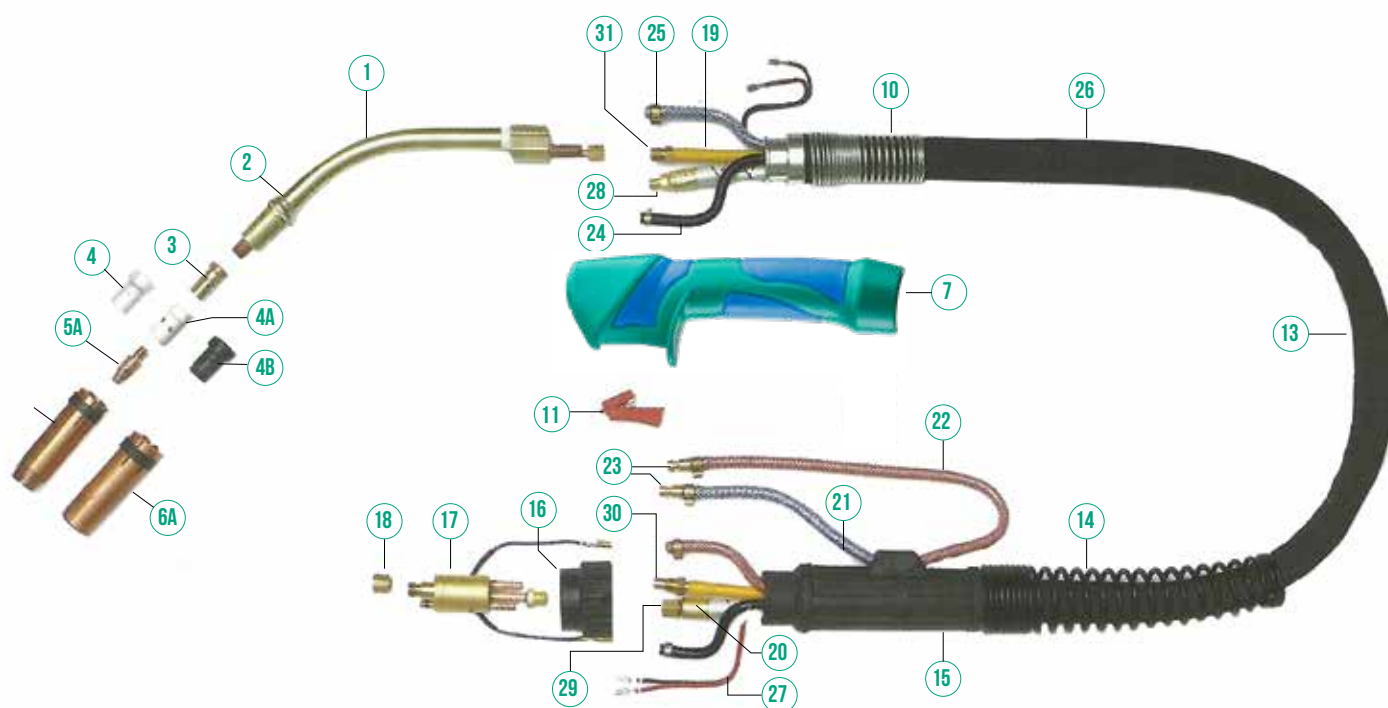
Available with 3 different cables measurements: 3 - 4 - 5 metres.

RECOMMENDED USE

Ideal for medium heavy carpentry, for steel wires up to 1.6 mm and for aluminium and stainless-steel wires up to 1.0 mm in diameter.

CODE	Description	Weight (kg)	No.Pcs.
9T02005013SPC16	Mig Torch BZ 501 3 m cable 16	3.70	1
9T02005014SPC16	Mig Torch BZ 501 4 m cable 16	3.90	1
9T02005015SPC16	Mig Torch BZ 501 5 m cable 16	4.10	1

BZ 501 TORCH SPARE PARTS



CODE	Description	No.	No. Pcs.
9T0206501C	Complete adjustable swan neck BZ 501	1	1
9T0203501	Washer 501	2	100
9T0205501C/C	Tip holder BZ 501-BZ 551	3	10
9T0205501	Insulated gas diffuser BZ 501	4	50
9T0205501CER	Ceramic gas diffuser BZ 501	4A	50
9T0205501/CB	Black insulated gas diffuser BZ 501	4B	50
9T0201M83008C	Contact tip M8x30 ø 0.8	5A	20
9T0201M83010C	Contact tip M8x30 ø 1.0	5A	20
9T0201M83012C	Contact tip M8x30 ø 1.2	5A	20
9T0201M83014C	Contact tip M8x30 ø 1.4	5A	20
9T0201M83016C	Contact tip M8x30 ø 1.6	5A	20
9T0201M83008H	Contact tip M8x30 ø 0.8 Cuczr	5A	10
9T0201M83010H	Contact tip M8x30 ø 1.0 Cuczr	5A	10
9T0201M83012H	Contact tip M8x30 ø 1.2 Cuczr	5A	10
9T0201M83014H	Contact tip M8x30 ø 1.4 Cuczr	5A	10
9T0201M83016H	Contact tip M8x30 ø 1.6 Cuczr	5A	10
9T020250116C	Adjustable conic nozzle ø 16	6	10
9T020250119C	Adjustable conic nozzle ø 19	6A	10
9T0208ABZTT	Complete anatomic handle rubbered	7	1
9T02144M92	Spring for handle	10	1
9T0209ABZ	Switch for anatomic handle	11	1
9T02205013	Cable assembly cpl. 3 m	13	1
9T02205014	Cable assembly cpl. 4 m	13	1
9T02205015	Cable assembly cpl. 5 m	13	1
9TEA311	Spring for small connector case	14	1
9TBW159	Big connector case	15	1

(Follows next page)

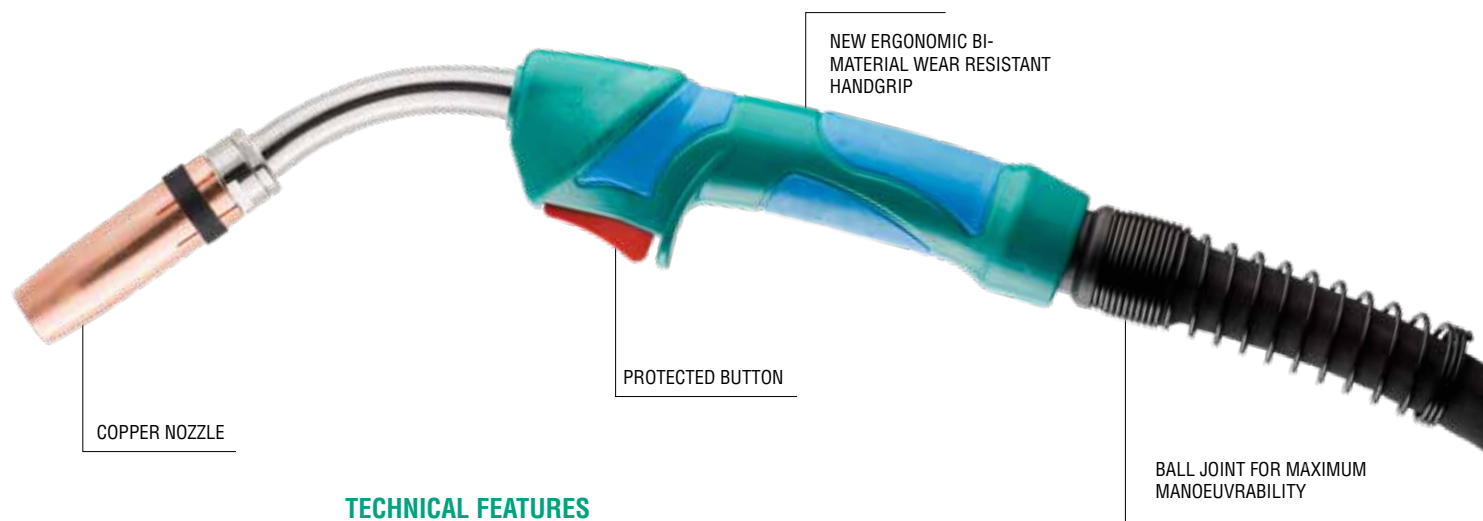
(Continues from previous page)

CODE	Description	No.	No.Pcs.
9T023004C	Nut for case	16	1
9T0230501C	Back torch body movable plug water	17	1
9T023006C	Liner nut	18	1
9T02245013GO	Rubber power cable 3 m for H ₂ O	19	1
9T02245014GO	Rubber power cable 4 m for H ₂ O	19	1
9T02215013	Rilsan wire conduit 3 m	20	1
9T02215014	Rilsan wire conduit 4 m	20	1
9T02215015	Rilsan wire conduit 5 m	20	1
9TVAGH58BPVC	PVC hose 5x8 blue for H ₂ O	21	100
9TVAGH58B	Rubber hose 5x8 blue for H ₂ O	21	250
9TVAGH58RPVC	PVC hose 5x8 red for H ₂ O	22	100
9TVAGH58R	Rubber hose 5x8 red for H ₂ O	22	250
9T0235501	Male quick connection H ₂ O	23	10
9TVAGH57NPVC	PVC hose 5x8 black	24	100
9T02305011	Clamp ø 9.5	25	100
9T02305012	Clamp ø 10.5	25	100
9T02305013	Clamp ø 8.7	25	100
9T02305014	Clamp ø 8.0	25	100
9TVAPR2528N	Canvas sheating 25x28 N	26	40
9TVAPR2831N	Canvas sheating 28x31 N	26	40
9TVACVBP	Control wire	27	100
9T02PG501A	Male fitting front rilsan wire con.	28	1
9T02PG501P	Male fitting back rilsan wire con.	29	1
9T0245M501C	Male fitting for p.c. BZ 501 C	30	1
9T0245F501C	Female fitting for p.c. BZ 501 C	31	1

INTERCHANGEABLE
SPARE PARTS AND
COMPATIBLE WITH
MAJOR EUROPEAN
MANUFACTURERS.

BZ 551 TORCH

The new professional torch with double water-cooling circuit.



TECHNICAL FEATURES

Protective gas	CO ₂ or Mix
Voltage class	L
Cooling	Water
Wire diameter	0.6 – 0.8 – 1.2 – 1.6
Working cycle	60% 550A CO ₂ - 500A Mix

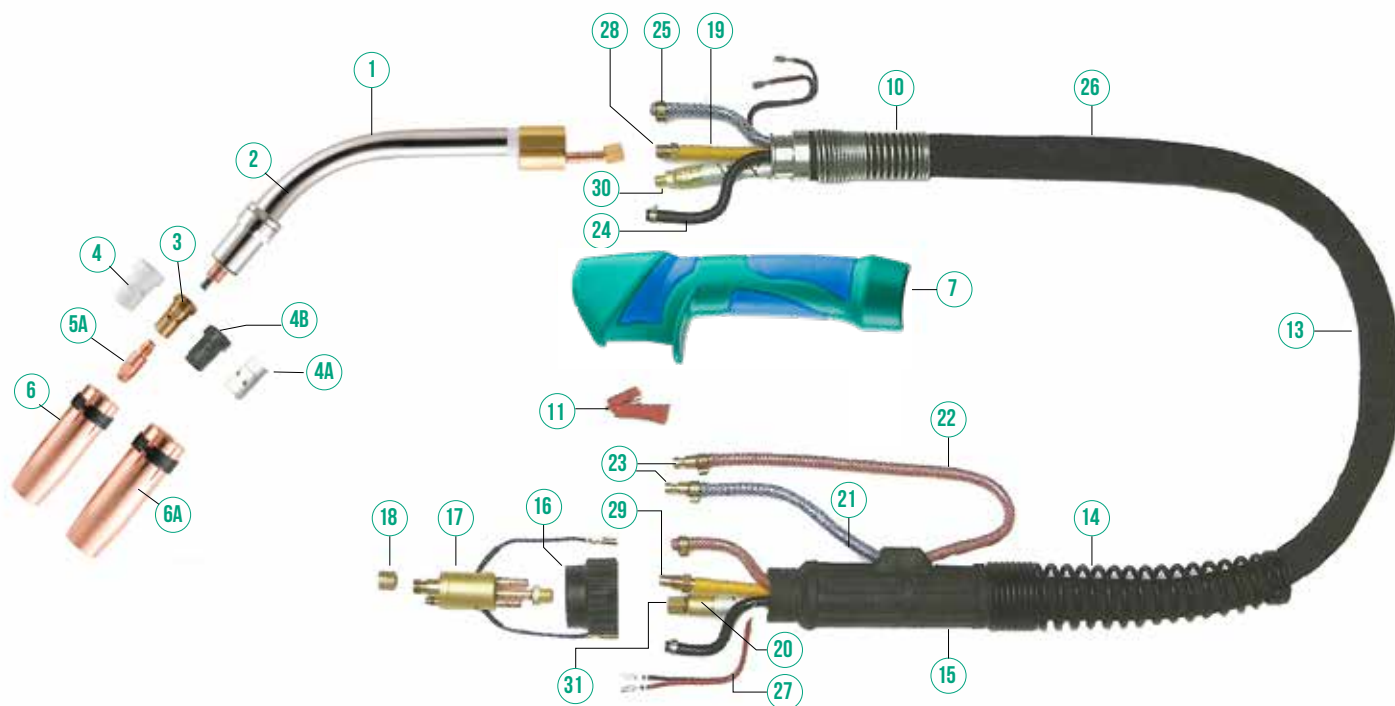
New torch BZ551 with double water-cooling system guarantees an additional cooling of the consumables, drastically reducing their wear. The double cooling system guarantees a higher flow of the liquid, less spurt adhesion and a higher durability of the consumables. The ergonomic and lightweight handgrip allows excellent weight balancing and easy manoeuvrability without straining too much the user's hand. A special protective edge on the button prevents accidental ignition.

Available with 3 different cables measurements: 3 - 4 - 5 metres.

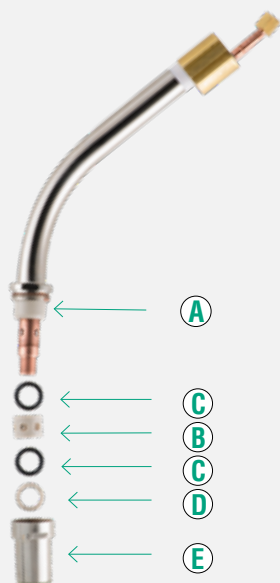
RECOMMENDED USE

BZ 551 torches excel in the MIG pulsat applications. Ideal for medium heavy carpentry, for steel wires up to 1.6 mm and for aluminium and stainless-steel wires up to 1.0 mm in diameter.

CODE	Description	Weight (kg)	No. Pcs.
9T02005513SR	TORCH BZ 551 3 M CABLE 16	3.7	1
9T02005514SR	TORCH BZ 551 4 M CABLE 16	3.9	1
9T02005515SR	TORCH BZ 551 5 M CABLE 16	4.1	1



Nozzle components



- A > Rear heat shield
- B > Water distributor
- C > O-Ring
- D > Front heat shield
- E > Threaded tip holder

CODE	Description	No.	No.Pcs.
9T0206551	Complete adjustable swan neck BZ 551	1	1
9T0206551B1	Rear heat shield	A	1
9T0206551WD	Water distributor	B	1
B5510003.KIT	O-ring kit 2 pcs	C	1
9T0206551F1	Front heat shield	D	1
9T0206551NH	Threaded tip holder	E	1
9T0203501	Washer	2	100
9T0205501C/C	Tip holder BZ 501-551	3	10
9T0205501	Gas diffuser STD	4	50
9T0205501CER	Ceramic gas diffuser	4A	50
9T0205501/CB	Black gas diffuser	4B	50
9T0201M83008C	Contact tip M8x30 ø 0,8	5A	20
9T0201M83010C	Contact tip M8x30 ø 1,0	5A	20
9T0201M83012C	Contact tip M8x30 ø 1,2	5A	20
9T0201M83014C	Contact tip M8x30 ø 1,4	5A	20
9T0201M83016C	Contact tip M8x30 ø 1,6	5A	20
9T0201M83008H	Contact tip M8x30 ø 0,8 CuCrZr	5A	10
9T0201M83010H	Contact tip M8x30 ø 1,0 CuCrZr	5A	10
9T0201M83012H	Contact tip M8x30 ø 1,2 CuCrZr	5A	10
9T0201M83014H	Contact tip M8x30 ø 1,4 CuCrZr	5A	10
9T0201M83016H	Contact tip M8x30 ø 1,6 CuCrZr	5A	10
9T020250116C	Adjustable conic nozzle ø 16	6	5
9T020250119C	Adjustable conic nozzle ø 19	6A	10
9T0208ABZTT	Complete anatomic handle rubbered	7	1
9T02144M92	Spring for handle	10	1
9T0209ABZ	Switch for handle	11	1
9T02205013	Cable assembly cpl. 3 m	13	1
9T02205014	Cable assembly cpl. 4 m	13	1
9T02205015	Cable assembly cpl. 5 m	13	1
9TEA311	Spring for small connector case	14	1
9TBW159	Big connector case	15	1

WIP LINERS AND WIRE CONDUITS FOR BZ TORCHES SERIES



9T0204ALT

Perfect for aluminum wires. Their resistance to high temperatures allows a longer life cycle of the wire and an easier internal sliding.

CODE	Description	No.Pcs.
9T0204T4WIP	4 m blue wip liner	1
9T0204T5WIP	5 m blue wip liner	1
9T0204T4RWIP	4 m red wip liner	1
9T0204T5RWIP	5 m red wip liner	1
9T0204P4WIP	4 m yellow wip liner	1
9T0204P6WIP	5 m yellow wip liner	1
9T0204501N4WIP	4 m nude wire conduit for BZ 501	1
9T0204501N5WIP	5 m nude wire conduit for BZ 501	1
9T0204AL15	4.5 m wire conduit ø 1.5 for aluminium	1
9T0204AL155	5.5 m wire conduit ø 1.5 for aluminium	1
9T0204AL25	4.5 m wire conduit ø 2.5 for aluminium	1
9T0204AL255	5.5 m wire conduit ø 2.5 for aluminium	1
9T0204ALT	Nut for aluminium wire conduit	10
9T0204ALG	Wire conduit + bull nose for aluminium	10

RADIAL ADAPTER BODY FOR BZ TORCHES SERIES



Allows to connect the torch to the welding machine.

CODE	Description	No.Pcs.
9T0242BZR	Radial adapter body	2

CONTROL WIRE



It allows to connect the switch with power unit.

CODE	Description	Length (m)
9TVACVBP	Control wire 2 x 0.50 mm²	100

POWER CABLES FOR BZ TORCHES SERIES



Suitable for both work and cooling. Available in 2 different materials: nylon or reinforced rubber.

CODE	Description	Length (m)	No.Pcs.
9T02245013	Nylon power cable for BZ 501	3	1
9T02245013GO	Rubber power cable for BZ 501	3	1
9T02245014	Nylon power cable for BZ 501	4	1
9T02245014GO	Rubber power cable for BZ 501	4	1
9T02245015	Nylon power cable for BZ 501	5	1
9T02245015GO	Rubber power cable for BZ 501	5	1

9T02245013

ASSEMBLED CABLES FOR BZ TORCHES SERIES

Coaxial cables assembled on both sides with faston and connectors. Suitable for air cooled torches.



9T0220154E



9T0220363E

CODE	Description	Length (m)	No.Pcs.
9T0220153E	Cavo coassiale assembl. 16 mm ²	3	1
9T0220154E	Cavo coassiale assembl. 16 mm ²	4	1
9T0220155E	Cavo coassiale assembl. 16 mm ²	5	1
9T0220253E	Cavo coassiale assembl. 25 mm ²	3	1
9T0220254E	Cavo coassiale assembl. 25 mm ²	4	1
9T0220255E	Cavo coassiale assembl. 25 mm ²	5	1
9T0220263E	Cavo coassiale assembl. 35 mm ²	3	1
9T0220264E	Cavo coassiale assembl. 35 mm ²	4	1
9T0220265E	Cavo coassiale assembl. 35 mm ²	5	1
9T0220363E	Cavo coassiale assembl. 50 mm ²	3	1
9T0220364E	Cavo coassiale assembl. 50 mm ²	4	1
9T0220365E	Cavo coassiale assembl. 50 mm ²	5	1
9T0220403E	Cavo coassiale assembl. 66 mm ²	3	1
9T0220404E	Cavo coassiale assembl. 66 mm ²	4	1
9T0220405E	Cavo coassiale assembl. 66 mm ²	5	1

PVC HOSES FOR BZ TORCHES SERIES

PVC tubes with high resistance polyester reinforcement. Suitable for coolants, chemical solutions, compressed air. A black PVC gas tube is also available for air and water cooled MIG / TIG torches.



9TVAGH58RPVC

CODE	Description	Dimensions (ø x mm)	Length (m)
9TVAGH58BPVC	Blue reinforced PVC hose	5 x 8	100
9TVAGH58RPVC	Red reinforced PVC hose	5 x 8	100
9TVAGH58NPVC	Black reinforced PVC hose	5 x 8	100
9TVAGT510PVC	Transparent reinforced PVC hose	5 x 10	100
9TVAGH612BPVC	Blue reinforced PVC hose	6 x 12	100
9TVAGH612RPVC	Red reinforced PVC hose	6 X 12	100
9TVAGT612PVC	Transparent reinforced PVC hose	6 X 12	100
9TVAGT812PVC	Transparent reinforced PVC hose	8 X 12	100
9TVAGH813BPVC	Blue reinforced PVC hose	8 x 13	100
9TVAGH813RPVC	Red reinforced PVC hose	8 x 13	100
9TVAGT914PVC	Transparent reinforced PVC hose	9 X 14	100
9TVAGT913PVCN	Black reinforced PVC hose	9 x 13	100
9TVAGH57NPVC	Black gas PVC hose	5.5 x 7.5	100

CANVAS SHEATING FOR BZ TORCHES SERIES

Cloth rubber protections to cover packs of cables or pipes in order to protect them from abrasion, dirt and bad weather. They are supplied in rolls.



9TVAPR2628N

CODE	Description	Dimensions (ø x mm)	Length (m)
9TVAPR2628N	Canvas sheating	26 x 28	40
9TVAPR2831N	Canvas sheating	28 x 31	40
9TVAPR3033N	Canvas sheating	30 x 33	40
9TVAPR3538N	Canvas sheating	35 X 38	40
9TVAPR3840N	Canvas sheating	38 X 40	40
9TVAPR4043N	Canvas sheating	40 X 43	40
9TVAPR4548N	Canvas sheating	45 X 48	40
9TVAPR5154N	Canvas sheating	51 X 54	40

TW 1 TORCH

**Versatile and easy to handle, compatible
with original spare parts.**



COPPER NOZZLE

COMPOSITE CABLE WITH
ELEVATE FLEXIBILITY

TECHNICAL FEATURES

Protective gas	CO ₂ or Mix
Voltage class	L
Cooling	Air
Wire diameter	0.6 – 0.8 – 1.0 – 1.2
Working cycle	60% 200A CO ₂ – 150A Mix

Torch with American style handgrip and spare parts that are compatible with the original parts. The ergonomic handgrip design reduces operator fatigue. Suitable for repair and maintenance works.

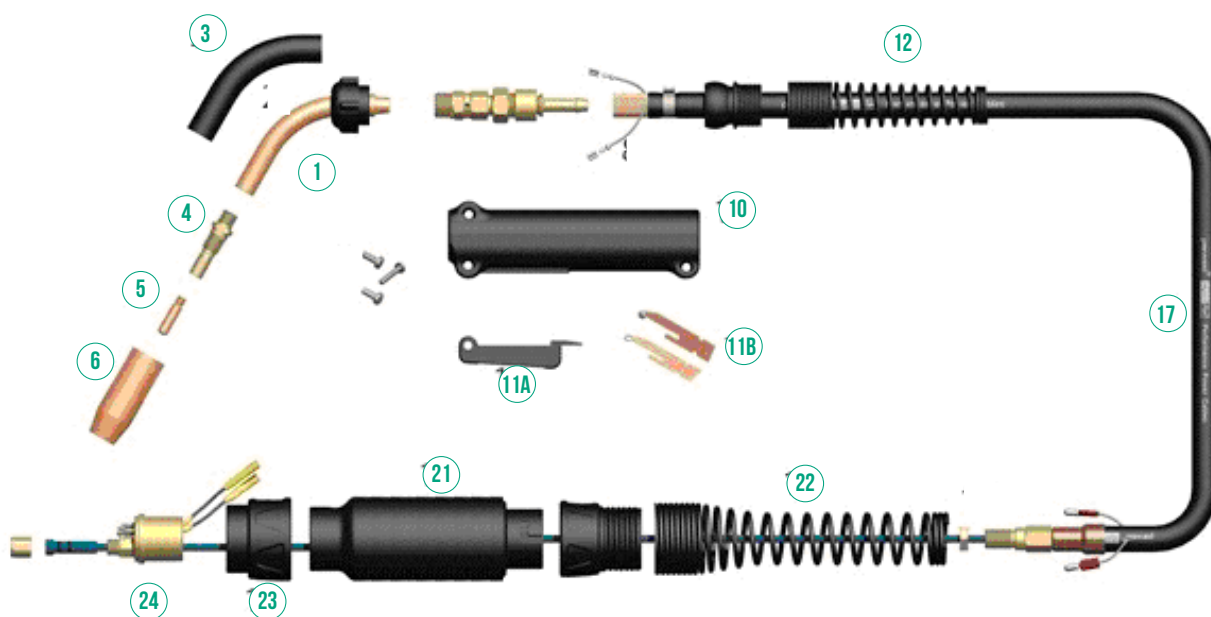
Available with 3 different cables measurements: 10 – 12 – 15 ft

RECOMMENDED USE

Designed for a wide range of applications, easy to use in several welding positions. Ideal for steel, stainless steel and aluminium wires up to 1.2 mm in diameter.

CODE	Description	Weight (kg)	No.Pcs.
9T01130E	TW1 Torch 10 ft. Euro connection	2.30	1
9T01140E	TW1 Torch 12 ft. Euro connection	2.60	1
9T01145E	TW1 Torch 15 ft. Euro connection	2.90	1

TW1 TORCH SPARE PARTS



CODE	Description	No.	No.Pcs.
9T016160C	Complete conductor tube TW1	1	1
9T0171A	Conductor tube insulation TW1	3	1
9T0151	Gas diffuser TW1	4	10
9T02011506C	Contact tip M6x25 ø 0.6	5	20
9T02011508C	Contact tip M6x25 ø 0.8	5	20
9T02011510C	Contact tip M6x25 ø 1.0	5	20
9T02011512C	Contact tip M6x25 ø 1.2	5	20
9T012137	Self insul. nozzle ø 10mm	6	10
9T012150	Self insul. nozzle ø 13mm	6	10
9T012162	Self insul. nozzle ø 16mm	6	10
9T0181	Handle case with screws	10	1
9T0191	Trigger switch with blades	11	1
9T0191A	Trigger switch without blades	11A	1
9T0191C	Switch blades set TW1	11B	1
9T011416S	Cable support TW1 spring	12	1
9T0120110E	Replac. Cable TW1 25 mm² 10 ft.	17	1
9T0120112E	Replac. Cable TW1 25 mm² 12 ft.	17	1
9T0120115E	Replac. Cable TW1 25 mm² 15 ft.	17	1
9TBW195	Small connector case	21	1
9TEA331	Spring for small connector case	22	1
9T023004C	Nut for case	23	1
9T023005TW	Euro connector for TW 12x1	24	1
9T014240455WIP	Wip liner ø 0.8/1.0 – 4.5 m	25	1

TW 2 TORCH

Quality combined with sturdiness. The high-quality components provide excellent performance, increased reliability and durability. Compatibility is ensured with all welders.



TECHNICAL FEATURES

Protective gas	CO ₂ or Mix
Voltage class	L
Cooling	Air
Wire diameter	0.6 – 0.8 – 1.0 – 1.2
Working cycle	60% 250A CO ₂ – 150A Mix

A robust torch that offers excellent performance and sturdiness to achieve high levels of productivity and durability, while at the same time being easy to use. Spare parts are Tweco compatible.

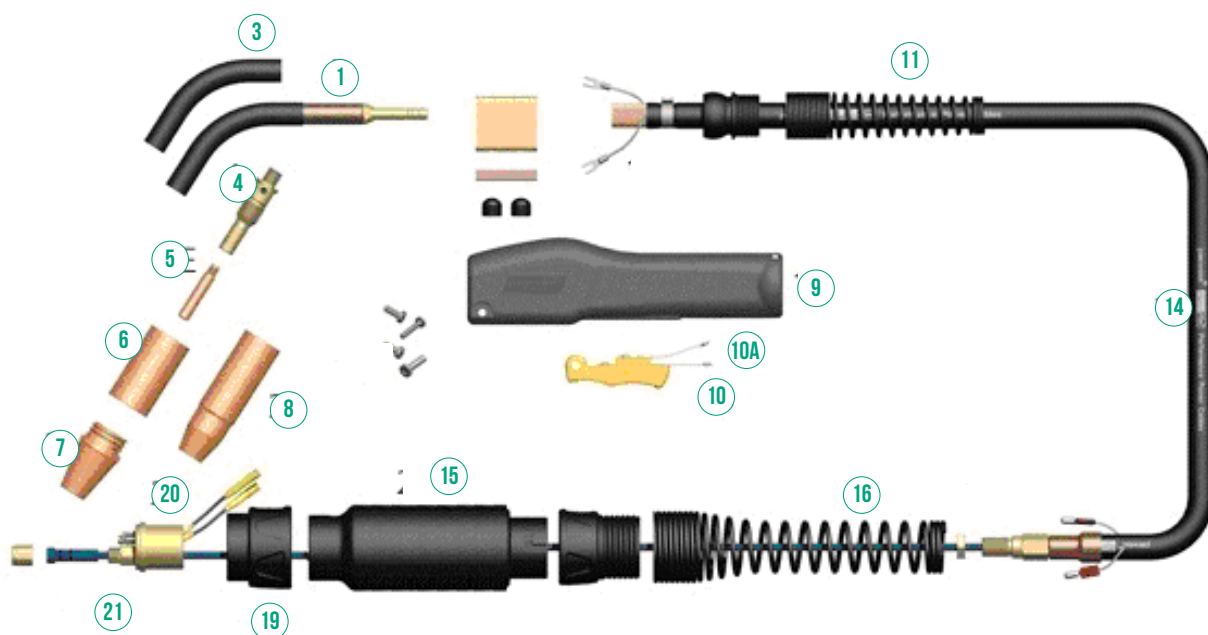
Available with 3 different cables measurements: 10 – 12 – 15 ft

RECOMMENDED USE

Ideal for semi-professional use, for steel, stainless steel and aluminium wires up to 1.6 mm in diameter.

CODE	Description	Weight (kg)	No.Pcs.
9T01230E	TW2 Torch 10 ft. Euro connection	2.90	1
9T01240E	TW2 Torch 12 ft. Euro connection	3.30	1
9T01245E	TW2 Torch 15 ft. Euro connection	3.70	1

TW 2 TORCH SPARE PARTS



CODE	Description	No.	No.Pcs.
9T0162A60C	Complete conductor tube 60° TW2	1	1
9T0172A	Conductor tube insulation TW2	3	1
9T0152FN	Gas diffuser TW2	4	10
9T0114H30C	Contact tip ø 0.8 mm	5	20
9T0114H40C	Contact tip ø 1.0 mm	5	20
9T0114H45C	Contact tip ø 1.2 mm	5	20
9T0114H52C	Contact tip ø 1.4 mm	5	20
9T0114H116C	Contact tip ø 1.6 mm	5	20
9T0134CT	Nozzle insul. for CT TW4	6	20
9T0124CT62C	Coarse thread nozzle ø 16 mm	7	10
9T012362	Self insul. Nozzle ø 16 mm	8	10
9T0182	Handle case with screws	9	1
9T0192	Trigger switch with blades	10	1
9T0192C	Switch blades set	10A	1
9T011426S	Cable support TW2 spring	11	1
9T0120210E	Replac. Cable TW2 35 mm² 10 ft.	14	1
9T0120212E	Replac. Cable TW2 35 mm² 12 ft.	14	1
9T0120215E	Replac. Cable TW2 35 mm² 15 ft.	14	1
9TBW195	Small connector case	15	1
9TEA331	Spring for small connector case	16	1
9T023004C	Nut for case	19	1
9T023005TW	Euro connector for TW 12x1	20	1
9T014240455WIP	Wip liner ø 0.8/1.0 – 4.5 m	21	1

TW 4 TORCH

Excellent performance and high productivity.



TECHNICAL FEATURES

Protective gas	CO ₂ or Mix
Voltage class	L
Cooling	Air
Wire diameter	0.8 – 1.0 – 1.2 – 1.4 – 1.6
Working cycle	60% 400A CO ₂ – 350A Mix

The American type handgrip design reduces operator fatigue during use. Excellent performance torch with high productivity and reduced downtime. Perfect welding that makes a good impression on anyone who appreciates a job well done. Spare parts are Tweco compatible.

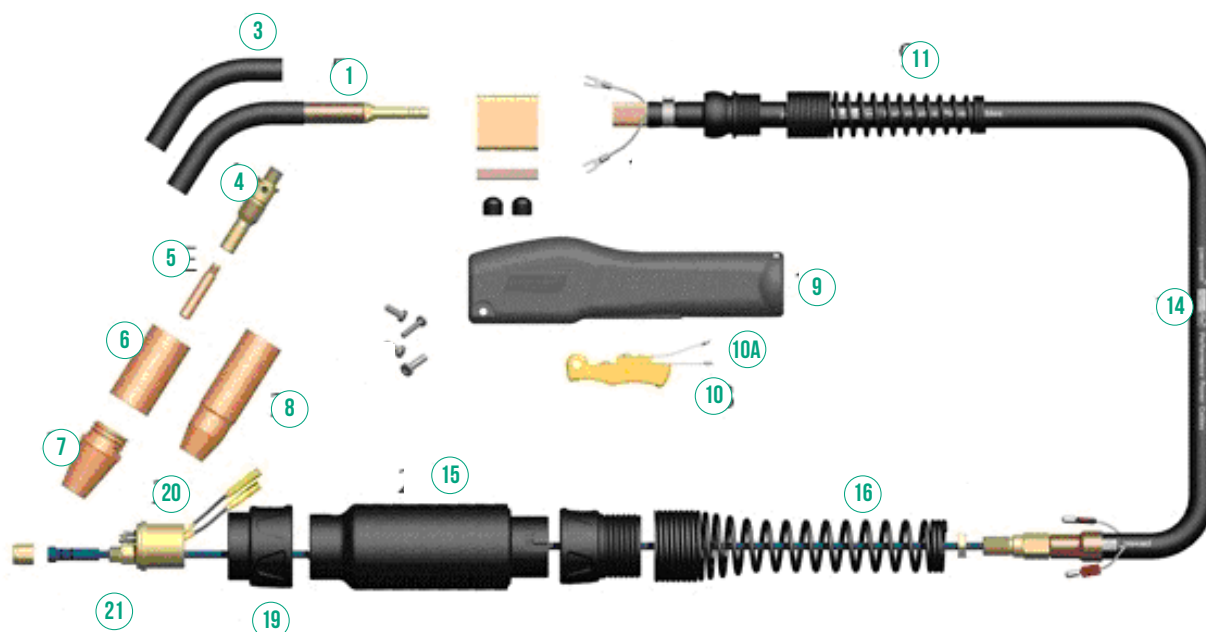
Available with 3 different cables measurements: 10 – 12 – 15 ft

RECOMMENDED USE

Ideal for semi-professional use, for steel, stainless steel and aluminium wires up to 1.6 mm in diameter.

CODE	Description	Weight (kg)	No.Pcs.
9T01430E	TW4 Torch 10 ft. Euro connection	3.60	1
9T01440E	TW4 Torch 12 ft. Euro connection	4.10	1
9T01445E	TW4 Torch 15 ft. Euro connection	4.60	1

TW 4 TORCH SPARE PARTS



CODE	Description	No.	No. Pcs.
9T0164A60C	Complete conductor tube 60° TW4	1	1
9T0174A	Conductor tube insulation TW4	3	1
9T0154A	Gas diffuser TW4	4	10
9T0114H30C	Contact tip ø 0.8 mm	5	20
9T0114H40C	Contact tip ø 1.0 mm	5	20
9T0114H45C	Contact tip ø 1.2 mm	5	20
9T0114H52C	Contact tip ø 1.4 mm	5	20
9T0114H116C	Contact tip ø 1.6 mm	5	20
9T0134CT	Nozzle insul. for CT TW4	6	20
9T0124CT62C	Coarse thread nozzle ø 16 mm	7	10
9T012362	Self insul. Nozzle ø 16 mm	8	10
9T0184	Handle case with screws	9	1
9T0194	Trigger switch with blades	10	1
9T0192C	Switch blades set	10A	1
9T011446S	Cable support TW4 spring	11	1
9T0120410E	Replac. Cable TW4 50 mm ² 10 ft.	14	1
9T0120412E	Replac. Cable TW4 50 mm ² 12 ft.	14	1
9T0120415E	Replac. Cable TW4 50 mm ² 15 ft.	14	1
9TBW159	Connector case	15	1
9TBW195	Small connector case	16	1
9T023004C	Nut for case	19	1
9T023005TW	Euro connector for TW 12x1	20	1
9T01441165WIP	Wip liner ø 1.0/1.6 – 4.5 m	21	1
9T01441167WIP	Wip liner ø 1.0/1.6 – 7.0 m	21	1



And of course, everything you need for TIG welding completes the Oxyturbo welding range.

TIG WELDING

An electric arc welding method in an inert atmosphere. It is the most effective, economical processes for the difficult welding of metals such as: stainless steel, aluminium, beryllium, copper, brass, cast iron, nickel, tantalum, titanium, columbio, mobilden, Evendur, Inconel, Monel alloys and cryogenic welding.

The arc, which is formed between the electrode and the base metal, is protected by gas (argon or helium or a mixture of the two gases) coming out of the gun where the electrode protrudes. The arc is ignited by a pilot spark which, causing ionisation of the protective gas, makes it conductive. For the high melting temperature of tungsten, the electrode does not melt and therefore does not take part in the melting process. The filler metal, present if the thickness of the pieces is higher than 1mm, is added into the electric arc area and will form the welding cord when melted. The entire welding area (arc, electrode, molten metal base, filler metal) is immersed in an inert environment consisting of the protective gas. This fact prevents the oxidation of the welded joint by the atmosphere and also allows the welding of reactive materials.

TIG WELDING APPLICATIONS

The TIG process is particularly suitable when small thicknesses of material, starting from a few tenths of a millimetre, are to be welded. However, it is not possible to weld thicknesses over a few mm (2-3 mm for steels) with a single seam (hence, generally, it is not used to weld thicknesses greater than 5-6 mm). Therefore, considering low productivity, it is often used to make the first seam of a joint, while filling is subsequently carried out with higher productivity processes. Given the characteristics of its procedure, it can be used in any position and can be used for continuous or spot welding. It is not advisable to use this procedure in outdoor locations, as even a moderate wind can cause dispersion of the protective gas.

WP9-WP20 TORCHES

Compact and easy to handle, for all welding needs.



With DINSE connection 25-50 mm²

TECHNICAL FEATURES WP9

PROTECTIVE GAS	ARGON
VOLTAGE CLASS	L
COOLING	AIR
WORKING CYCLE	35% 110A DC 35% 95A AC

TECHNICAL FEATURES WP20

PROTECTIVE GAS	ARGON
VOLTAGE CLASS	L
COOLING	WATER
WORKING CYCLE	100% 250A DC 100% 220A AC

Equipped with a sturdy but lightweight handgrip. The SuperFlex version comes with a switch that can be activated for greater handling and practicality of use. In addition, the first section of the cable is in leather for further protection. Models with flywheels are equipped with a knob for opening and gas flow adjustment.

Available with 3 different cables measurements: 4 or 8 metres.

All the torches of the series are completed with a 25 or 50 mm² DINSE adapter and m12x1 connection.

WP9 TORCHES

Ideal for light carpentry for 0.5 - 1.6 mm diameter tungsten electrodes.

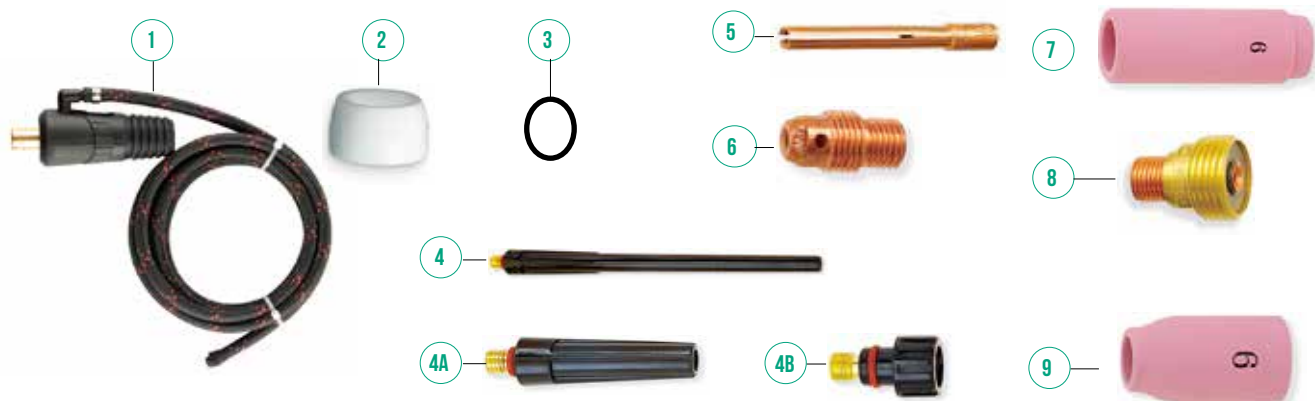
CODE	Description	Dinse connection (mm ²)	Weight (kg)	No.Pcs.
9TWP912RSF	Torch WP9 SUPERFLEX 4 m	50	1.70	1
9TWP912RSF+D25	Torch WP9 SUPERFLEX 4 m	25	1.70	1
9TWP925RSF	Torch WP9 SUPERFLEX 8 m	50	2.70	1
9TWP925RSF+D25	Torch WP9 SUPERFLEX 8 m	25	2.70	1
9TWP9V12	Torch WP9 with flywheel 4 m	50	1.50	1
9TWP9V12+D25	Torch WP9 with flywheel 4 m	25	1.50	1
9TWP9V25	Torch WP9 with flywheel 8 m	50	2.50	1
9TWP9V25+D25	Torch WP9 with flywheel 8 m	25	2.50	1

WP20 TORCHES

Ideal for medium carpentry for 0.5 - 3.2 mm diameter tungsten electrodes.

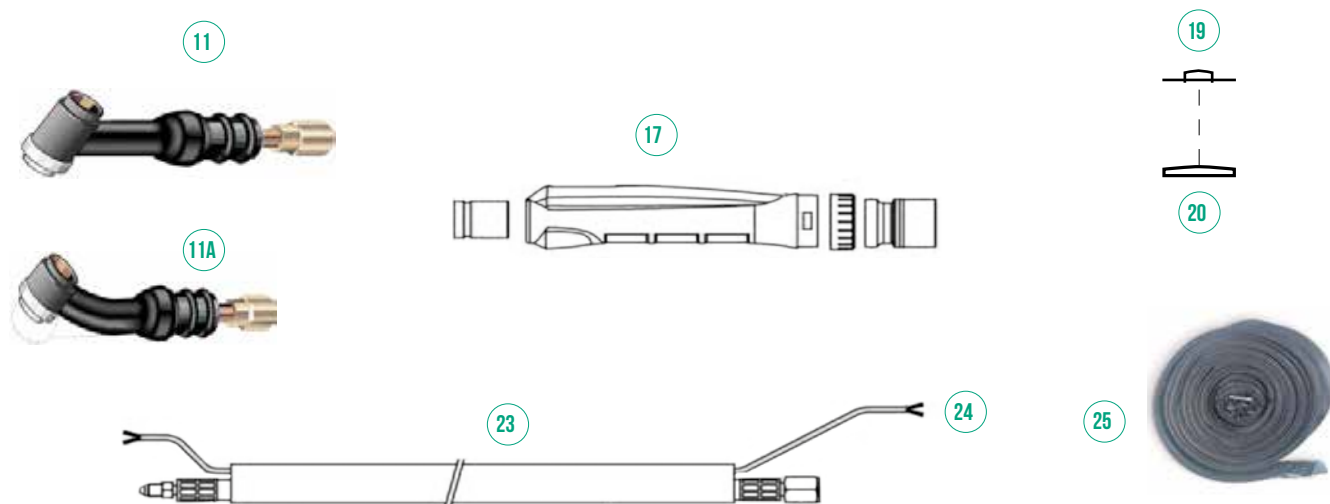
CODE	Description	Dinse connection (mm ²)	Weight (kg)	No.Pcs.
9TWP2012RSF	Torch WP20 SUPERFLEX 4 m	50	1.70	1
9TWP2012RSF+D25	Torch WP20 SUPERFLEX 4 m	25	1.70	1
9TWP2025RSF	Torch WP20 SUPERFLEX 8 m	50	2.70	1
9TWP2025RSF+D25	Torch WP20 SUPERFLEX 8 m	25	2.70	1

WP9 AND WP20 TORCHES COMMON SPARE PARTS



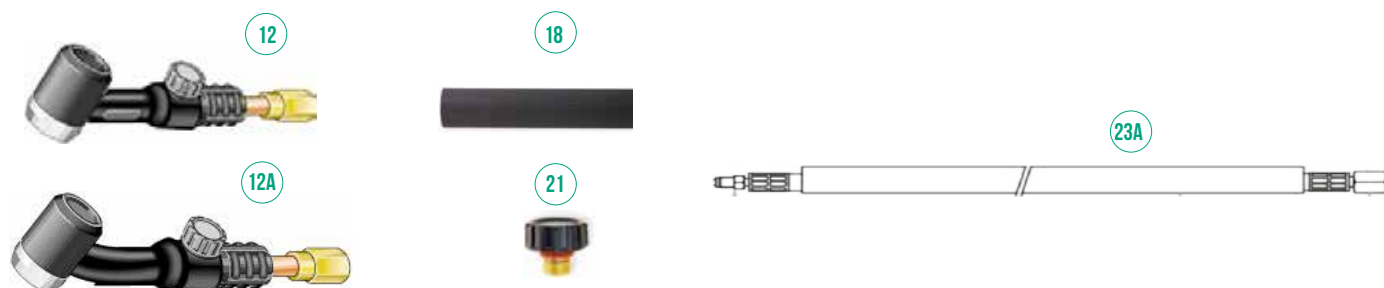
CODE	Description	No.	No.Pcs.
9TTGADS25TR	Tig Dinse 25 mm² adapter	1	1
9TTGADS50TR	Tig Dinse 50 mm² adapter	1	1
9T0598882	Heat shield WP9 - WP20	2	1
9T98W77	O-ring for bag cap	3	10
9T41V24	Long back cap	4	1
9T41V35	Medium back cap	4A	10
9T41V33	Short back cap	4B	10
9T13N20	Collet ø 0.5 mm	5	10
9T13N21	Collet ø 1.0 mm	5	10
9T13N22	Collet ø 1.6 mm	5	10
9T70066WT	Collet ø 2.0 mm	5	10
9T13N23	Collet ø 2.4 mm	5	10
9T13N24	Collet ø 3.2 mm	5	10
9T13N25	Collet body ø 0.5mm	6	10
9T13N26	Collet body ø 1.0 mm	6	10
9T13N27	Collet body ø 1.6 mm	6	10
9T70067WT	Collet body ø 2.0 mm	6	10
9T13N28	Collet body ø 2.4 mm	6	10
9T13N29	Collet body ø 3.2 mm	6	10
9T13N08	Ceramic nozzle g 4 ø 6.0 mm	7	10
9T13N09	Ceramic nozzle g 5 ø 8.0 mm	7	10
9T13N10	Ceramic nozzle g 6 ø 9.5 mm	7	10
9T13N11	Ceramic nozzle g 7 ø 11.0 mm	7	10
9T13N12	Ceramic nozzle g 8 ø 12.7 mm	7	10
9T13N13	Ceramic nozzle g 10 ø 17.5 mm	7	10
9T45V43	Collet body gas lens ø 1.6 mm	8	10
9T45V44	Collet body gas lens ø 2.4 mm	8	10
9T45V45	Collet body gas lens ø 3.2 mm	8	10
9T53N58	Ceramic nozzle gas lens ø 6.0 mm	9	10
9T53N59	Ceramic nozzle gas lens ø 8.0 mm	9	10
9T53N60	Ceramic nozzle gas lens ø 9.5 mm	9	10
9T53N61	Ceramic nozzle gas lens ø 11.0 mm	9	10

WP9 SUPERFLEX TORCH SPECIFIC SPARE PARTS



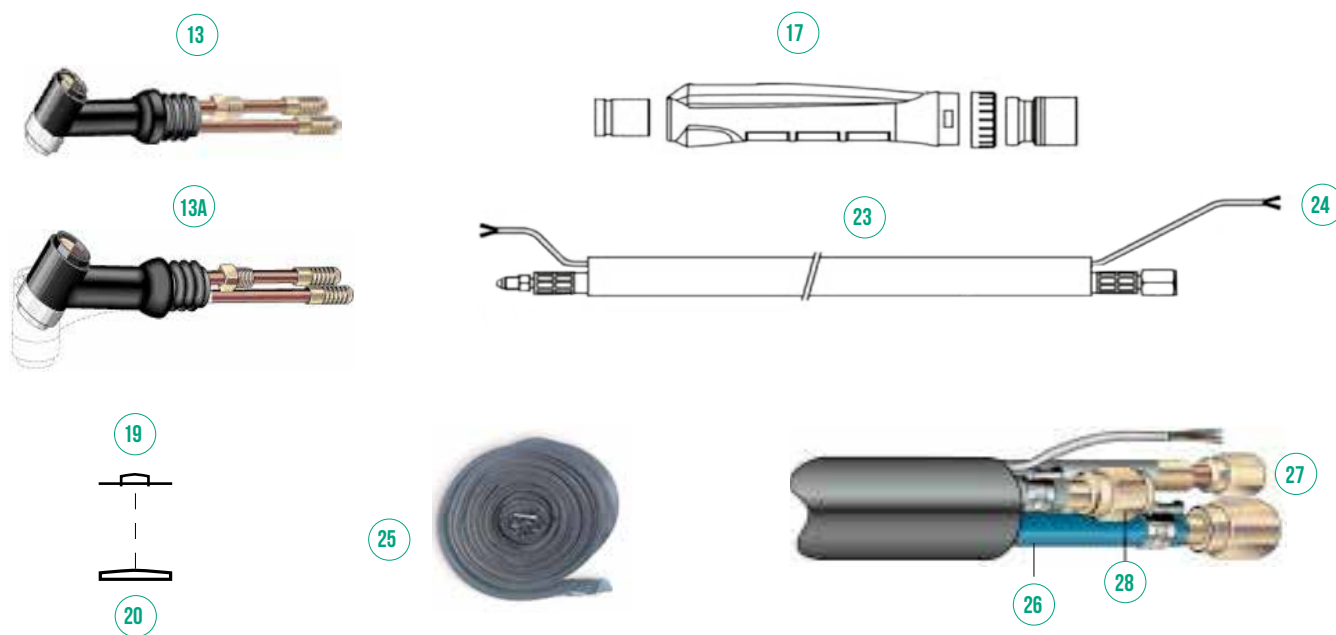
CODE	Description	No.	No. Pcs.
9TWP9	WP9 torch body	11	1
9TWP9F	WP9 flexible torch body	11A	1
9TTP91C	Complete handle	17	1
9TTG004	Switch	19	1
9TTG003	Micro 1 position	20	1
9T57Y01R12TR	Nylon power cable 4 m 3/8"	23	1
9T57Y01R12TR12	Nylon power cable 4 m 12x1	23	1
9TVACVBP	Control wire	24	100
9TVAGD2325	Rubber sheath 23x25	25	50
9TVAPL26281	Leather sleeve 26x28 0.5 m		1

WP9 TORCH WITH FLYWHEEL SPECIFIC SPARE PARTS



CODE	Description	No.	No. Pcs.
9TWP9V	Torch body with valve	12	1
9TWP9VF	Flexible torch body with valve	12A	1
9TH100	Standard handle	18	1
9TVS-2	Valve for torch body	21	1
9T57Y01R25G03/8	Rubber power cable 8 m 3/8"	23A	1
9T57Y01R25G0	Rubber power cable 8 m 12x1	23A	1

WP20 SUPERFLEX TORCH SPECIFIC SPARE PARTS



CODE	Description	No.	No.Pcs.
9TWP20	Torch body	13	1
9TWP20F	Flexible torch body	13A	1
9TTP91C	Complete handle	17	1
9TTG004	Switch	19	1
9TTG003	Micro 1 position	20	1
9T45V03123/8	Nylon power cable 4 m 3/8"	23	1
9T45V04253/8	Nylon power cable 8 m 3/8"	23	1
9T45V0312	Nylon power cable 4 m 12x1	23	1
9T45V0425	Nylon power cable 8 m 12x1	23	1
9TVACVBP	Control wire	24	100
9TVAGD2826	Rubber sheat 28x26	25	50
9TVAGH46NPVC	O/B black PVC hose ø 4x6	27	100
9TVAGH46R	O/B red rubber hose ø 4x6	28	250
9TVAPL26281	Leather sleeve 26x28 0.5 m		1

WP17-WP18 WP26 TORCHES

High performance in a small device for highly critical welding.



Accurate testing has made it possible to allow these small torches to operate in small spaces, while maintaining a high level of performance. Thanks to the use of highly conductivity materials, current drops are minimised and very high power is transferred to the arc. The cables have a wear-resistant coating with excellent flexibility, and the first section of SuperFlex version cables are in leather.

The flywheel on the torch body (in the version with flywheel) allows for gas adjustment according to end user needs, permitting significant gas savings.

Available with 2 different cables measurements: 4 or 8 metres.

All the torches of the series are completed with a 25 or 50 mm² DINSE adapter and M12x1 connection.

TECHNICAL FEATURES WP17

PROTECTIVE GAS	ARGON
VOLTAGE CLASS	L
COOLING	AIR
WORKING CYCLE	35% 140A DC 35% 125A AC

TECHNICAL FEATURES WP18

PROTECTIVE GAS	ARGON
VOLTAGE CLASS	L
COOLING	WATER
WORKING CYCLE	100% 320A DC 100% 270A AC

TECHNICAL FEATURES WP26

PROTECTIVE GAS	ARGON
VOLTAGE CLASS	L
COOLING	AIR
WORKING CYCLE	35% 180A DC 35% 150A AC

WP17 TORCHES

Ideal for light carpentry and for small inverter generators, for 0.5 - 2.4 mm diameter tungsten electrodes.

CODE	Description	Dinse connection (mm ²)	Weight (kg)	No.Pcs.
9TWP1712RSF	Torch WP17 SUPERFLEX 4 m	50	1.65	1
9TWP1712RSF+D25	Torch WP17 SUPERFLEX 4 m	25	1.65	1
9TWP1725RSF	Torch WP17 SUPERFLEX 8 m	50	2.65	1
9TWP1725RSF+D25	Torch WP17 SUPERFLEX 8 m	25	2.65	1
9TWP17V12	Torch WP17 with flywheel 4 m	50	1.65	1
9TWP17V12+D25	Torch WP17 with flywheel 4 m	25	1.65	1
9TWP17V25	Torch WP17 with flywheel 8 m	50	2.65	1
9TWP17V25+D25	Torch WP17 with flywheel 8 m	25	2.65	1

WP18 TORCHES

Ideal for medium carpentry for 0.5 – 4.0 mm diameter tungsten electrodes.

CODE	Description	Dinse connection (mm ²)	Weight (kg)	No.Pcs.
9TWP1812RSF	Torch WP18 SUPERFLEX 4 m	50	2.00	1
9TWP1812RSF+D25	Torch WP18 SUPERFLEX 4 m	25	2.00	1
9TWP1825RSF	Torch WP18 SUPERFLEX 8 m	50	3.00	1
9TWP1825RSF+D25	Torch WP18 SUPERFLEX 8 m	25	3.00	1

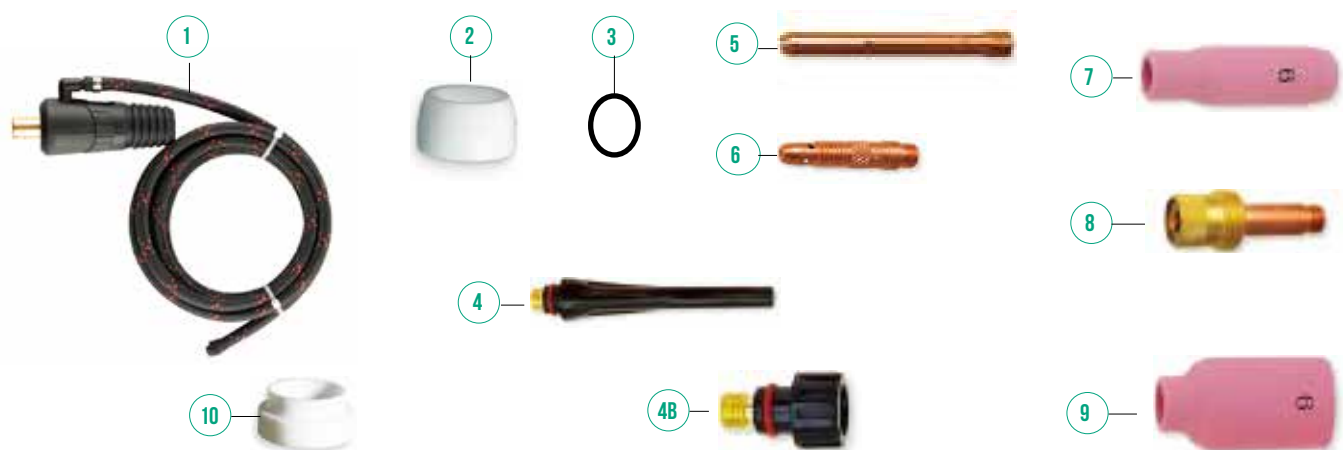
WP26 TORCHES

Ideal for medium carpentry for 0.5 – 4.0 mm diameter tungsten electrodes.

CODE	Description	Dinse connection (mm ²)	Weight (kg)	No.Pcs.
9TWP2612RSF	Torch WP26 SUPERFLEX 4 m	50	2.20	1
9TWP2612RSF+D25	Torch WP26 SUPERFLEX 4 m	25	2.20	1
9TWP2625RSF	Torch WP26 SUPERFLEX 8 m	50	2.20	1
9TWP2625RSF+D25	Torch WP26 SUPERFLEX 8 m	25	2.20	1
9TWP26V12	Torch WP26 with flywheel 4 m	50	2.20	1
9TWP26V12+D25	Torch WP26 with flywheel 4 m	25	2.20	1
9TWP26V25	Torch WP26 with flywheel 8 m	50	3.20	1
9TWP26V25+D25	Torch WP26 with flywheel 8 m	25	3.20	1

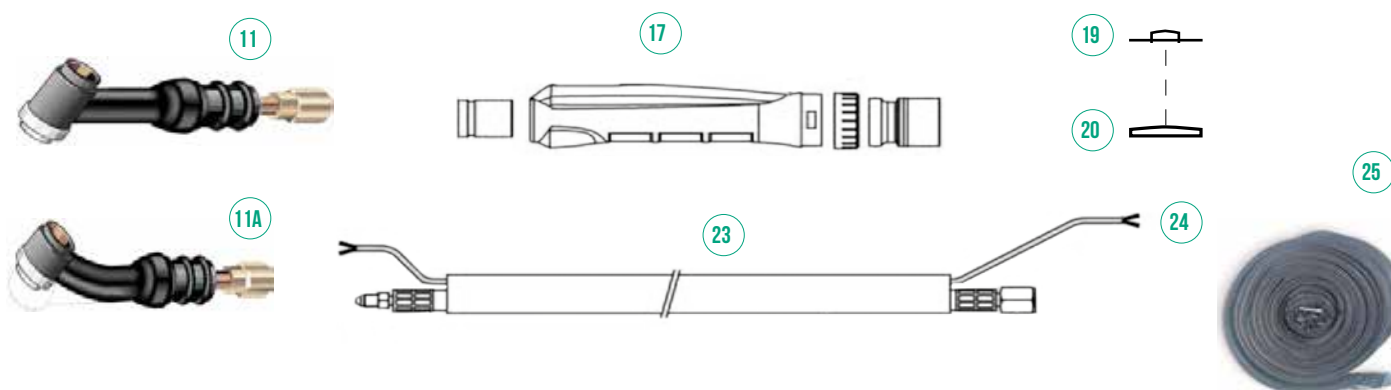


WP17 - WP18 - WP26 TORCHES COMMON SPARE PARTS



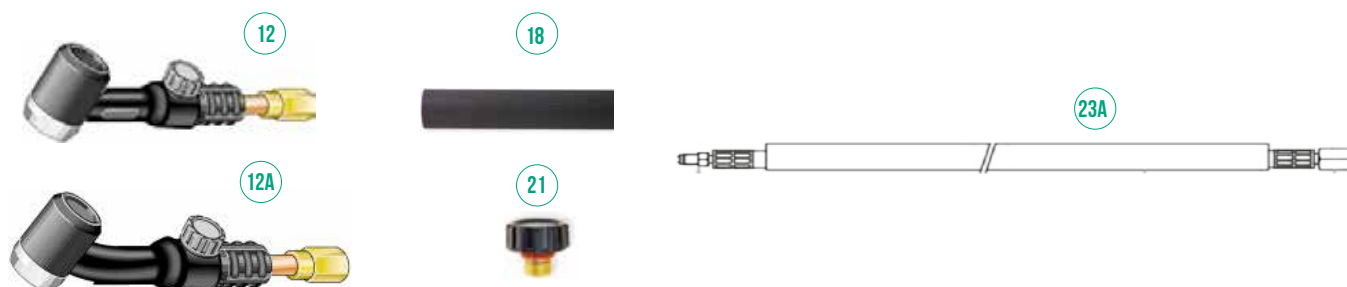
CODE	Description	No.	No. Pcs.
9TTGADS25TR	Tig Dinse 25 mm² adapter	1	1
9TTGADS50TR	Tig Dinse 50 mm² adapter	1	1
9T18CG	Heat shield	2	1
9T98W18	O-ring for bag cap	3	10
9T57Y02	Long back cap	4	10
9T57Y04	Short back cap	4B	10
9T10N21	Collet ø 0.5 mm	5	10
9T10N22	Collet ø 1.0 mm	5	10
9T10N23	Collet ø 1.6 mm	5	10
9T70062WT	Collet ø 2.0 mm	5	10
9T10N24	Collet ø 2.4 mm	5	10
9T10N25	Collet ø 3.2 mm	5	10
9T54N20	Collet ø 4.0 mm	5	10
9T10N29	Collet body ø 0.5 mm	6	10
9T10N30	Collet body ø 1.0 mm	6	10
9T10N31	Collet body ø 1.6 mm	6	10
9T70064WT	Collet body ø 2.0 mm	6	10
9T10N32	Collet body ø 2.4 mm	6	10
9T10N28	Collet body ø 3.2 mm	6	10
9T406488	Collet body ø 4.0 mm	6	10
9T10N49	Ceramic nozzle g 5 ø 8.0 mm	7	10
9T10N48	Ceramic nozzle g 6 ø 9.5 mm	7	10
9T10N47	Ceramic nozzle g 7 ø 11.5 mm	7	10
9T10N46	Ceramic nozzle g 8 ø 12.7 mm	7	10
9T10N45	Ceramic nozzle g 10 ø 17.5 mm	7	10
9T10N44	Ceramic nozzle g 12 ø 19.0 mm	7	10
9T45V24	Collet body gas lens ø 1.0 mm	8	10
9T45V25	Collet body gas lens ø 1.6 mm	8	10
9T70060WT	Collet body gas lens ø 2.0 mm	8	10
9T45V26	Collet body gas lens ø 2.4 mm	8	10
9T45V27	Collet body gas lens ø 3.2 mm	8	10
9T45V28	Collet body gas lens ø 4.0 mm	8	10
9T54N18	Ceramic nozzle gas lens g 4 ø 6.0 mm	9	10
9T54N17	Ceramic nozzle gas lens g 5 ø 8.0 mm	9	10
9T54N16	Ceramic nozzle gas lens g 6 ø 9.5 mm	9	10
9T54N15	Ceramic nozzle gas lens g 7 ø 11.0 mm	9	10
9T54N14	Ceramic nozzle gas lens g 8 ø 12.5 mm	9	10
9T54N19	Ceramic nozzle gas lens g 11 ø 17.5 mm	9	10
9T54N01	Heat shield gas lens	10	10

WP17 SUPERFLEX TORCH SPECIFIC SPARE PARTS



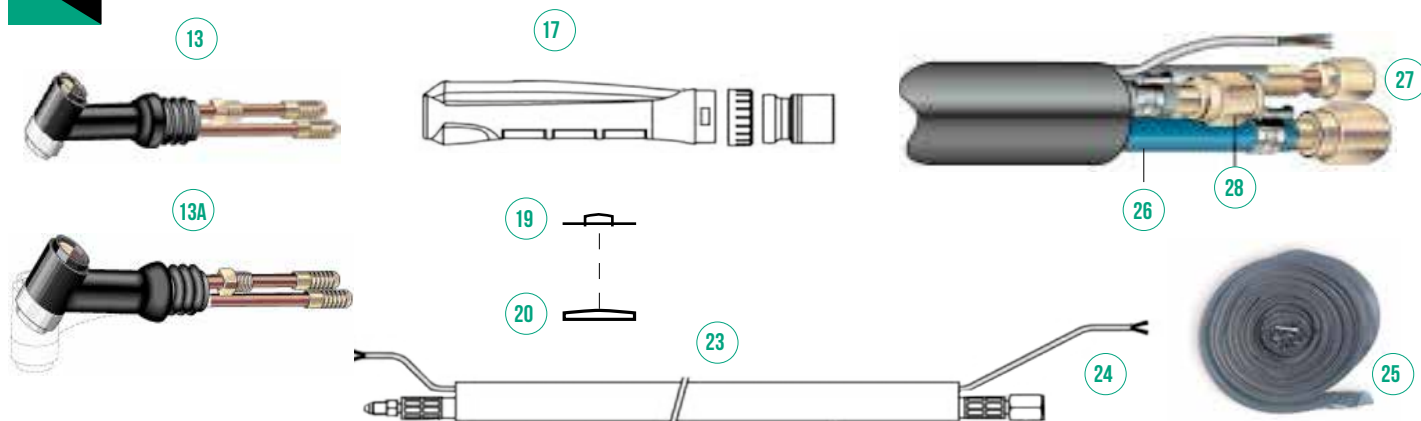
CODE	Description	No.	No. Pcs.
9TWP17	WP17 torch body	11	1
9TWP17F	WP17 flexible torch body	11A	1
9TTP91C	Complete handle	17	1
9TTG004	Switch	19	1
9TTG003	Micro 1 position	20	1
9T57Y01R12TR	Nylon power cable 4 m 3/8"	23	1
9T57Y01R12TR12	Nylon power cable 4 m 12x1	23	1
9TVACVBP	Control wire	24	100
9TVAGD2826	Rubber sheath 28x26	25	50
9TVAPL26281	Leather sleeve 26x28 0.5 m		1

WP17 TORCH WITH FLYWHEEL SPECIFIC SPARE PARTS



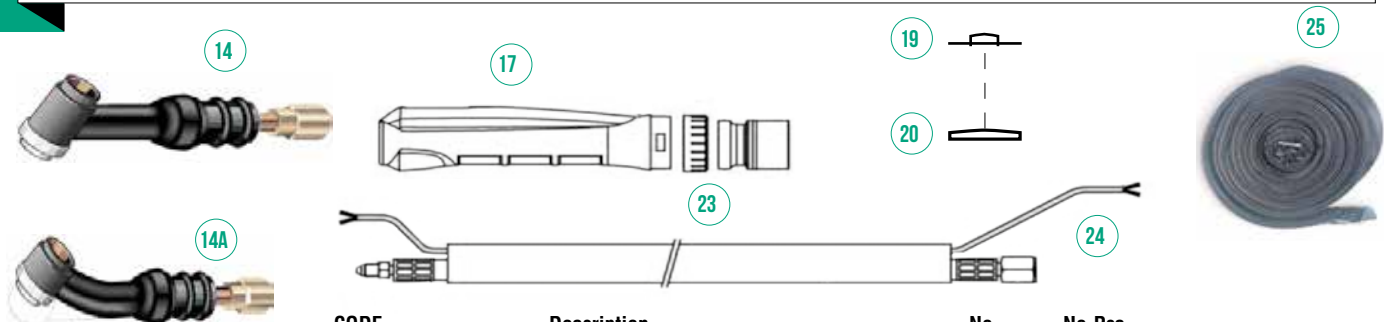
CODE	Description	No.	No. Pcs.
9TWP17V	Torch body with flywheel	12	1
9TWP17VF	Flexible torch body with flywheel	12A	1
9TH100	Standard handle	18	1
9TVS-2	Flywheel for torch body	21	1
9T57Y01R12G03/8	Rubber power cable 4 m 3/8"	23A	1
9T57Y01R25G03/8	Rubber power cable 8 m 3/8"	23A	1

WP18 SUPERFLEX TORCH SPECIFIC SPARE PARTS



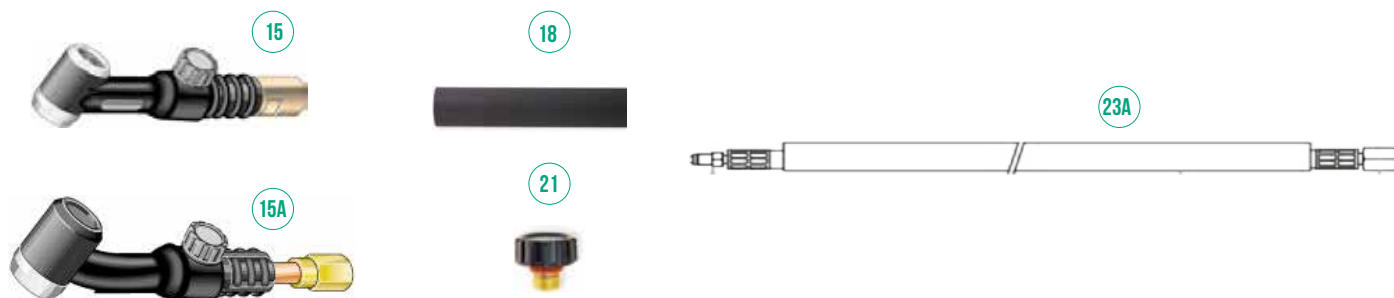
CODE	Description	No.	No.Pcs.
9TWP18	Torch body	13	1
9TWP18F	Flexible torch body	13A	1
9TTG001	Complete handle	17	1
9TTG004	Switch	19	1
9TTG003	Micro 1 position	20	1
9T41V29253/8	Nylon power cable 8 m 3/8"	23	1
9T40V6412	Nylon power cable 4 m 12x1	23	1
9T41V2925	Nylon power cable 8 m 12x1	23	1
9TVACVBP	Control wire	24	100
9TVAGD2826	Rubber sheat 28x26	25	50
9TVAGH58B	O/B blue rubber hose ø 5x8	26	250
9TVAGH58BPVC	O/B blue PVC hose ø 5x8	26	100
9TVAGH58N	O/B black rubber hose ø 5x8	27	250
9TVAGH58NPVC	O/B black PVC hose ø 5x8	27	100
9TVAGH58R	O/B red rubber hose ø 5x8	28	250
9TVAGH58RPVC	O/B red PVC hose ø 5x8	28	100
9TVAPL26281	Leather sleeve 26x28 0.5 m		1

WP26 SUPERFLEX TORCH SPECIFIC SPARE PARTS



CODE	Description	No.	No.Pcs.
9TWP26	Torch body	14	1
9TWP26F	Flexible torch body	14A	1
9TTG001	Complete handle	17	1
9TTG004	Switch	19	1
9TTG003	Micro 1 position	20	1
9T46V28R12TR 3/8	Nylon power cable 4 m 3/8"	23	1
9T46V30R25TR 3/8	Nylon power cable 8 m 3/8"	23	1
9T46V28R12TR	Nylon power cable 4 m 12x1	23	1
9T46V30R25TR	Nylon power cable 8 m 12x1	23	1
9TVACVBP	Control wire	24	100
9TVAGD2826	Rubber sheat 28x26	25	50
9TVAPL26281	Leather sleeve 26x28 0.5 m		1

WP26 TORCH WITH FLYWHEEL SPECIFIC SPARE PARTS



CODE	Description	No.	No. Pcs.
9TWP26V	Torch body with flywheel	15	1
9TWP26VF	Flexible torch body with flywheel	15A	1
9TH200	Standard handle	18	1
9TVS-2	Flywheel for torch body	21	1
9T46V28R12G03/8	Rubber power cable 4 m 3/8"	23A	1
9T46V30R25G03/8	Rubber power cable 8 m 3/8"	23A	1
9T46V28R12G0	Rubber power cable 4 m 12x1	23A	1
9T46V30R25G0	Rubber power cable 8 m 12x1	23A	1



CONTROL WIRE



Cavetto che permette di collegare il pulsante con il generatore.

CODE	Description	Length (m)
9TVACVBP	Control wire 2 x 0.50 mm ²	100

POWER CABLES FOR WP TORCHES SERIES

Suitable for both work and cooling. Available in 2 different materials (nylon or reinforced rubber) and with two different connections (12x1 or 3/8).



9T40V6412

CODE	Description	Length (m)	Connection	No.Pcs.
9T57Y01R12TR12	Nylon power cable WP9 / WP17	4	12x1	1
9T57Y01R12TR	Nylon power cable WP9 / WP17	4	3/8	1
9T57Y01R12G0	Rubber power cable WP9 / WP17	4	12x1	1
9T57Y01R12G03/8	Rubber power cable WP9 / WP17	4	3/8	1
9T57Y01R25TR12	Nylon power cable WP9 / WP17	8	12X1	1
9T57Y01R25TR	Nylon power cable WP9 / WP17	8	3/8	1
9T57Y01R25G0	Rubber power cable WP9 / WP17	8	12x1	1
9T57Y01R25G03/8	Rubber power cable WP9 / WP17	8	3/8	1
9T40V6412	Nylon power cable WP18	4	12x1	1
9T40V64123/8	Nylon power cable WP18	4	3/8	1
9T41V2925	Nylon power cable WP18	8	12x1	1
9T41V29253/8	Nylon power cable WP18	8	3/8	1
9T45V0312	Nylon power cable WP20	4	12x1	1
9T45V03123/8	Nylon power cable WP20	4	3/8	1
9T45V0425	Nylon power cable WP20	8	12x1	1
9T45V04253/8	Nylon power cable WP20	8	3/8	1
9T46V28R12TR	Nylon power cable WP26	4	12x1	1
9T46V28R12TR3/8	Nylon power cable WP26	4	3/8	1
9T46V28R12G0	Rubber power cable WP26	4	12x1	1
9T46V28R12G03/8	Rubber power cable WP26	4	3/8	1
9T46V30R25TR	Nylon power cable WP26	8	12x1	1
9T46V30R25TR3/8	Nylon power cable WP26	8	3/8	1
9T46V30R25G0	Rubber power cable WP26	8	12x1	1
9T46V30R25G03/8	Rubber power cable WP26	8	3/8	1

CANVAS SHEATING FOR BZ TORCHES SERIES



9TVAGD2826

EPDM rubber protections to cover packs of cables or pipes in order to protect them from abrasion, dirt and bad weather. They are supplied in rolls.

CODE	Description	Dimensions (ø x mm)	Length (m)
9TVAGD2123	Canvas sheathing	21 X 23	50
9TVAGD2325	Canvas sheathing	23 X 25	50
9TVAGD2826	Canvas sheathing	26 X 28	50

PVC HOSES FOR BZ TORCHES SERIES

PVC tubes with high resistance polyester reinforcement. Suitable for coolants, chemical solutions, compressed air. A black PVC gas tube is also available for air and water cooled MIG / TIG torches.



9TVAGH58RPVC

CODE	Description	Dimensions (ø x mm)	Length (m)
9TVAGH58BPVC	Blue reinforced PVC hose	5 x 8	100
9TVAGH58RPVC	Red reinforced PVC hose	5 x 8	100
9TVAGH58NPVC	Black reinforced PVC hose	5 x 8	100
9TVAGT510PVC	Transparent reinforced PVC hose	5 x 10	100
9TVAGH612BPVC	Blue reinforced PVC hose	6 x 12	100
9TVAGH612RPVC	Red reinforced PVC hose	6 X 12	100
9TVAGT612PVC	Transparent reinforced PVC hose	6 X 12	100
9TVAGT812PVC	Transparent reinforced PVC hose	8 X 12	100
9TVAGH813BPVC	Blue reinforced PVC hose	8 x 13	100
9TVAGH813RPVC	Red reinforced PVC hose	8 x 13	100
9TVAGT914PVC	Transparent reinforced PVC hose	9 X 14	100
9TVAGT913PVCN	Black reinforced PVC hose	9 x 13	100
9TVAGH57NPVC	Black gas PVC hose	5.5 x 7.5	100

TUNGSTEN ELECTRODES

In compliance to
AWS A5.12-98 ISO
6848-2004E

A complete range for TIG welding

Tungsten electrodes are used in arc welding with inert gas and tungsten (TIG). Tungsten is used at very high temperatures as it resists melting and degrades very little (if working in a controlled atmosphere with inert gases as is usually the case). The electrodes are made by sintering powders and subsequent forging.

Tungsten electrodes for TIG generally contain small quantities of metal oxides which ensure benefits of materials such as:

- Facilitated start of the current transient
- Improved arc stability
- Increased current of the rod
- Reduced risk of contaminating the base surface
- Increased life of the electrode

The most used electrodes for the TIG welding process are as follows:

- Pure tungsten electrodes
- Thoriated tungsten electrodes
- Cerium tungsten electrodes
- 1.5% or 2% Lanthanum tungsten electrodes
- Universal tungsten electrodes

The table below may be helpful in choosing the most suitable electrode for your needs.

Tipo	Metal		Arc stability	Ignition	Duration	Heat resistance
	Light alloys	Steel and stainless steel				
Pure tungsten	*		**	*	*	*
Thoriated tungsten		*	*	***	**	**
Cerium tungsten		*	**	*	**	**
Lanthanum tungsten	*	*	**	***	***	***

***excellent ** good * average

Each pack contains 10 electrodes. L=175mm

PURE TUNGSTEN ELECTRODE WP 00 COLOUR: GREEN

Good electric arc stability in AC soldering. Can also be applied with DC power for small power source. Particularly suitable for welding light metals and light metal alloys. Specifically, for welding aluminium.



CODE	Description	No.Pcs.
9EWP0016	Pure tungsten electrodes Ø 1.6mm	10
9EWP0020	Pure tungsten electrodes Ø 2.0mm	10
9EWP0024	Pure tungsten electrodes Ø 2.4mm	10
9EWP0032	Pure tungsten electrodes Ø 3.2mm	10
9EWP0040	Pure tungsten electrodes Ø 4.0mm	10

THORIATED TUNGSTEN ELECTRODE WT 20 COLOUR: RED

These electrodes contain 2% thorium and are the most used in the world for their excellent welding performance. Specific for welding stainless steel. They require a good suction system as it's vapours or dusts are harmful if inhaled, especially when sharpening. Since this material in certain conditions contains radioactive elements, even below the tolerance thresholds allowed, this electrode is only supplied upon request.



CODE	Description	No.Pcs.
9EWT2010	Thoriated tungsten electrodes Ø 1.0mm	10
9EWT2016	Thoriated tungsten electrodes Ø 1.6mm	10
9EWT2020	Thoriated tungsten electrodes Ø 2.0mm	10
9EWT2024	Thoriated tungsten electrodes Ø 2.4mm	10
9EWT2032	Thoriated tungsten electrodes Ø 3.2mm	10
9EWT2040	Thoriated tungsten electrodes Ø 4.0mm	10

2% CERIUM TUNGSTEN ELECTRODE WC 20

COLOUR: GREY

First generation environmentally safe electrode. Used to replace thoriated electrodes to work around even minimal problems, due to the presence of thorium oxide. Good ignition and optimal duration. Specific for welding aluminium and stainless steel.



CODE	Description	No.Pcs.
9EWC2010	Cerium tungsten electrodes Ø 1.0mm	10
9EWC2016	Cerium tungsten electrodes Ø 1.6mm	10
9EWC2020	Cerium tungsten electrodes Ø 2.0mm	10
9EWC2024	Cerium tungsten electrodes Ø 2.4mm	10
9EWC2032	Cerium tungsten electrodes Ø 3.2mm	10
9EWC2040	Cerium tungsten electrodes Ø 4.0mm	10

2% LANTHANUM TUNGSTEN ELECTRODE WL 20

COLOUR: BLUE

Environmentally safe electrode ideal for replacing, with greater durability, thoriated electrodes in automated systems that weld stainless steels with DC power. During use, it is best to keep the nozzle clean without altering its geometry. **Not radioactive.**



CODE	Description	No.Pcs.
9EWL2016	2% Lanthanum tungsten electrodes Ø 1.6mm	10
9EWL2020	2% Lanthanum tungsten electrodes Ø 2.0mm	10
9EWL2024	2% Lanthanum tungsten electrodes Ø 2.4mm	10
9EWL2032	2% Lanthanum tungsten electrodes Ø 3.2mm	10
9EWL2040	2% Lanthanum tungsten electrodes Ø 4.0mm	10

1.5% LANTHANUM TUNGSTEN ELECTRODE WL 15

COLOUR: GOLD

Good electric arc stability in AC/DC soldering, unlike thoriated 2% which is only used with DC. It has a long duration and can also be used with higher current than normal electrodes. Great performance with low currents. Particularly suitable for spot welding. Recommended for carbon and stainless steels, aluminium, magnesium, titanium, nickel and copper alloys. **Not radioactive.**



CODE	Description	No.Pcs.
9EWL1510	1.5% Lanthanum tungsten electrodes Ø 1.0mm	10
9EWL1516	1.5% Lanthanum tungsten electrodes Ø 1.6mm	10
9EWL1520	1.5% Lanthanum tungsten electrodes Ø 2.0mm	10
9EWL1524	1.5% Lanthanum tungsten electrodes Ø 2.4mm	10
9EWL1532	1.5% Lanthanum tungsten electrodes Ø 3.2mm	10
9EWL1540	1.5% Lanthanum tungsten electrodes Ø 4.0mm	10

UNIVERSAL TUNGSTEN ELECTRODE WTR 20

COLOUR: TURQUOISE

Universal use electrode. Provides excellent performance both in DC and AC soldering. Good arc stability at 500 Ampere. The most common among thorium-free electrodes. Recommended for the welding of aluminium and light alloys, together with stainless steel.



CODE	Description	No.Pcs.
9EWU0016	Universal tungsten electrodes Ø 1.6mm	10
9EWU0024	Universal tungsten electrodes Ø 2.4mm	10
9EWU0032	Universal tungsten electrodes Ø 3.2mm	10



MANUAL PLASMA TORCHES

For years, this has been a widespread and appreciated technology within the industry. A jet of plasma gas melts material in the cutting area and removes it, leaving a well-cut line. Through its special nozzle, the torch dispenses an inert gas. Through this gas, an electric arc is formed between an electrode and the material in the process of being cut. The electric arc transforms gas into plasma. The very high plasma temperatures (approximately 10,000°C) bring the material to be cut to the melting temperature, the molten metal is evacuated from the melting groove and cutting is carried out. There are then several methods for cutting the plasma: the choice is based on a variety of factors, such as the degree of precision of the cut and its mechanical or manual implementation. Beside conventional cutting, we can remember dual gas systems, with water and precision screen.

Plasma is considered the fourth state of material. It is a highly ionised gas and is an excellent electrical conductor. The reproducibility of plasma in an industrial and repetitive way is carried out through a device called a torch.

PLASMA CUTTING, UNDENIABLE BENEFITS:

- **Considerable cutting speed**
- **High precision at edges**
- **Good cost-benefit ratio**
- **Multiple applications**

Plasma cutting is in fact suitable for all electrical conductive materials.

PLASMA ARC USES

Thanks to plasma cutting it is possible to cut both thin sheets and considerable thicknesses. There are many plasma cutting applications in the industrial sector. The cutting of stainless steel, carbon steel and aluminium sheets of different thicknesses is particularly used in the transport industry as well as in the refrigeration and air conditioning field.

The ability to cut very thick slabs is especially valuable in the naval industry, but also for the creation and machining of pressure vessels, as well as earth moving vehicles. Plasma cutting effectively lends itself to the contoured cutting of tubes and other cylindrical materials, for the creation of grooves and inclined cuts, as well as for bending, perforation and gouging processes.

CB50 TORCHES

Plasma torches: for the most demanding operators.



TECHNICAL FEATURES

SAFETY SYSTEM	Electrical
IGNITION	with pilot and HF arc
CUTTING CURRENT	50A – 60% working cycle
SUPPLIED GAS	clean, dry air at 5 bar – 165 l/min
FLOW TIME	40 sec.

A lightweight, easy to handle torch. The ignition button is located at the top of the handgrip protected by an edge that prevents accidental ignition.

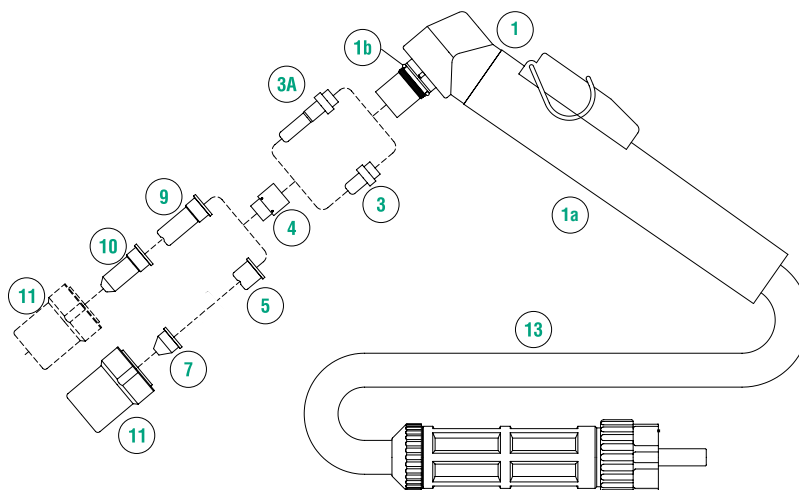
Available with 2 different connections (1/8" and centralised) and with a 6-meter cable.

RECOMMENDED USE

Ideal for cutting thin sheets in light metallurgy.

CODE	Description	Connection	L=m	Weight (kg)	No. pcs.
9P03050/C	CB50 TORCH	1 / 8	6	2.5	1
9P03051/C	CB50 TORCH	Centralized	6	2.5	1

SPARE PARTS



CODE	Description	No.	No. pcs.
9P01000	Torch body	1	1
9P03280/C	Complete handle with button	1A	1
9P01000.60	O-ring for CB 50	1B	10
9P52512/L	Electrode	3	10
9P52513/L	Long electrode	3A	10
9P60001	Air diffuser	4	2
9P51095	Contact tip ø 1.0 mm L=11.2 mm	5	10
9P51099	Contact tip ø 1.0 mm L=12.3 mm	5	10
9P51098	Conic contact tip ø 1.0 mm – low amp.	7	10
9P51102	Long contact tip ø 1.0 mm	9	10
9P51102/S	Long contact tip ø 1.1 mm	9	10
9P51101	Long conic contact tip ø 1.0 mm low amp.	10	10
9P60320	External tip holder	11	4
9P03240	Rubber cable 1/8 6m	13	1

CB70 TORCHES

Technological, versatile torches.



TECHNICAL FEATURES

SAFETY SYSTEM	Electrical
IGNITION	with pilot and HF arc
CUTTING CURRENT	70A – 60% working cycle
SUPPLIED GAS	clean, dry air at 5 bar – 170 l/min
FLOW TIME	40 sec. recommended

A very versatile torch for its machining speed and wide range of materials with which it can be used. The temperature reached by the jet are such as to cause the metal to melt, cutting it.

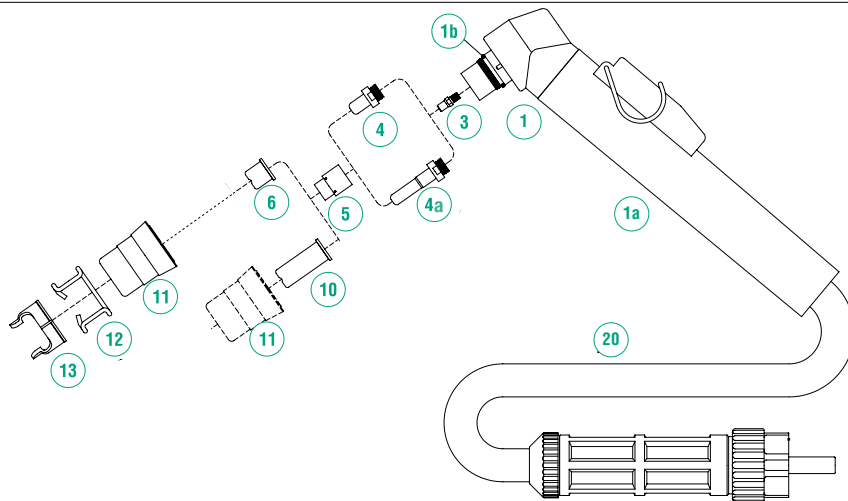
Available with 2 different connections (1/8" and centralized) and a 6-meter cable.

RECOMMENDED USE

Ideal in the field of metallurgy for steel and stainless steel sheets.

CODE	Description	Connection	L=m	Weight (kg)	No. pcs.
9P03070/CS	CB70 TORCH	1 / 8	6	2.8	1
9P03071/CS	CB70 TORCH	Centralized	6	2.8	1

SPARE PARTS



CODE	Description	No.	No. pcs.
9P01070	Complete torch body	1	1
9P03280/C	Complete handle with button	1A	1
9P01001.60	O-ring for CB70	1B	10
9P01070.42	Diffuser	3	1
9P52551	Electrode	4	10
9P52553	Long electrode	4A	10
9P60001	Air diffuser	5	2
9P51100.09	Contact tip ø 0.8 mm L=12.3 mm	6	10
9P51099	Contact tip ø 1.0 mm L=12.3 mm	6	10
9P51100/S	Contact tip ø 1.1 mm L=12.3 mm	6	10
9P51096	Contact tip ø 1.2 mm L=12.3 mm	6	10
9P51102/S	Long contact tip ø 1.1 mm	10	10
9P51096/L	Long Contact tip ø 1.2 mm	10	10
9P60321	External tip holder	11	2
9P51901	Spacer spring	12	10
9P60363	Double pointed spacer	13	2
9P03240	Rubber cable 1/8 6m	20	1

CB100 TORCHES

A thin, rigid and stable jet with high specific power.



TECHNICAL FEATURES

SAFETY SYSTEM	electrical
IGNITION	with pilot and HF arc
CUTTING CURRENT	100A – 60% working cycle
SUPPLIED GAS	clean, dry air at 5 bar – 180 l/min
FLOW TIME	60 sec. recommended

The high temperatures reached by its jet make plasma cutting one of the most functional and used systems for sheet metal and metals in general. Its small overall size and weight make this torch very easy to handle

Available with 2 different connections (1/8" and centralised) and with 6-meter cable.

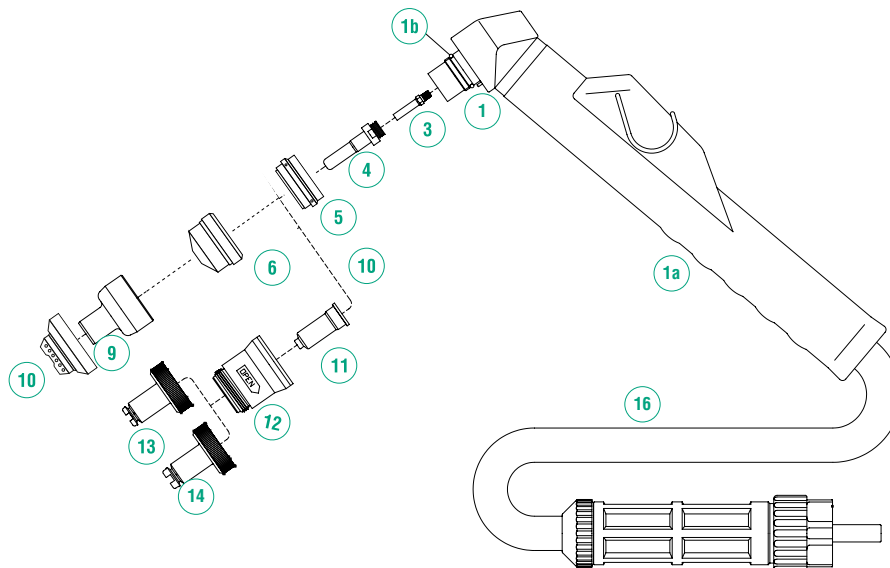
The spare cable packs have a 1/8 connection but are designed for the centralized one.

RECOMMENDED USE

Ideal for cutting carbon steel plates up to 50 mm.

CODE	Description	Connection	L=m	Weight (kg)	No.pcs.
9P03090/CS	CB100 TORCH	1 / 8	6	2.7	1
9P03091/CS	CB100 TORCH	Centralized	6	2.7	1

SPARE PARTS



CODE	Description	No.	No.pcs.
9P01090	Complete torch body	1	1
9P03280/C	Complete handle with button	1A	1
9P01002.60	O-ring for CB100-CB150	1B	10
9P01090.42	Diffuser	3	10
9P52549	Long electrode	4	10
9P60020	Air diffuser	5	2
9P51140/S	Contact tip ø 1.1mm	6	10
9P51041/S	Contact tip ø 1.3mm	6	10
9P51042/S	Contact tip ø 1.6mm	6	10
9P51972	Nozzle protection	9	10
9P51973	Spacer for contact cutting	10	10
9P03093/S	rubber cable 1/8 6m	16	1

CB150 TORCHES

Professional torches that offer great value for money.



TECHNICAL FEATURES

SAFETY SYSTEM	electrical
IGNITION	with pilot and HF arc
CUTTING CURRENT	150A – 60% working cycle
SUPPLIED GAS	clean, dry air at 5 bar – 200 l/min
FLOW TIME	90 sec. recommended

The largest of its family, but can be easily handled by operators. Primarily intended for professional use for conventional plasma cutting using a single gas (air) that cools and produces plasma. The ignition button is located at the top of the handgrip protected by an edge that prevents accidental ignition.

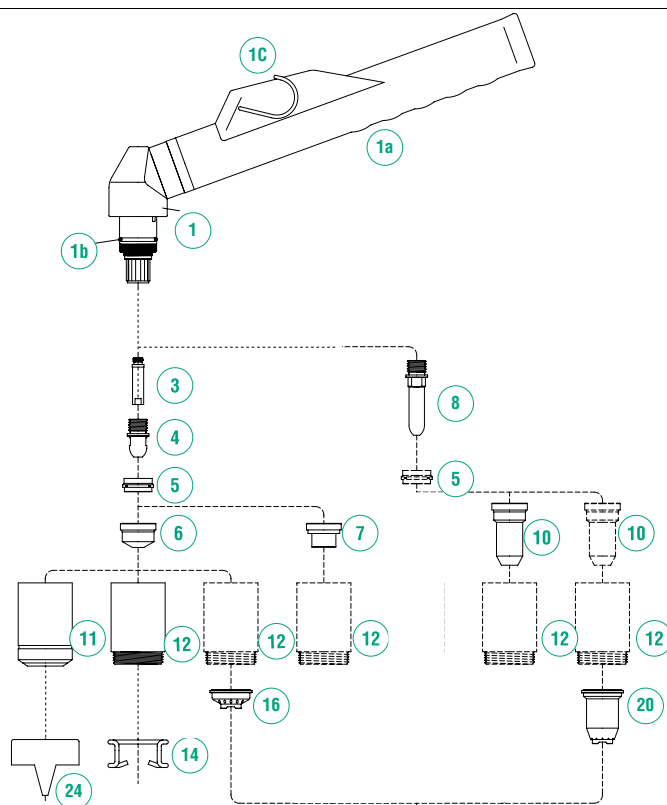
Available with 2 different connections (1/8" and centralised) and with 6-meter cable.

RECOMMENDED USE

Ideal for cutting materials with a thickness of up to 160 mm.

CODE	Description	Connection	L=m	Weight (kg)	No.pcs.
9P04050/CS	CB150 TORCH	1/8	6	3.40	1
9P04051/CS	CB150 TORCH	Centralized	6	3.40	1

SPARE PARTS



CODE	Description	No.	No.pcs.
9P02000	Complete torch body	1	1
9P04280/C	Complete handle without button CB150	1A	1

(Follows next page)



(Continues from previous page)

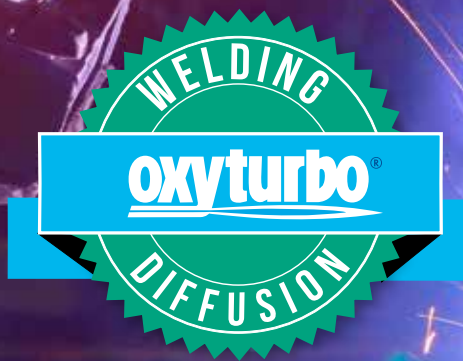
CODE	Description	No.	No. pcs.
9PBX0070	Button for handle CB150	1C	1
9P01002.60	O-ring for CB100-CB150	1B	10
9P05004	Diffuser	3	10
9P52540	Electrode	4	10
9P60020	Air diffuser	5	2
9P51140/S	Contact tip ø 1.1mm	6	10
9P51141/S	Contact tip ø 1.3mm	6	10
9P51142/S	Contact tip ø 1.6mm	6	10
9P51143/S	Contact tip ø 1.8mm	6	10
9P51144	Contact tip ø 3.0mm	6	10
9P51410	Contact tip ø 1.3mm	7	10
9P51411	Contact tip ø 1.6mm	7	10
9P51412	Contact tip ø 1.8mm	7	10
9P52549	Long electrode	8	10
9P51148.13	Long Contact tip ø 1.4mm	10	10
9P51148.16	Long Contact tip ø 1.6mm	10	10
9P51148.18	Long Contact tip ø 1.8mm	10	10
9P60330	External tip holder	11	2
9P60350	External tip holder for contact cutting	12	2
9P51911	Spacer spring	14	10
9P51973	Spacer for contact cutting	16	10
9P51958	Protection long tip	20	10
9P60370	Double pointed spacer	24	2
9P03093/S	Rubber cable 1/8 6m		1

PLASMA POWER CABLES

Cables in reinforced PVC with copper wire. Recommended both for cooling and for work of plasma torches. High pressure resistant.

CODE	Description	Length (m)	No.Pcs.
9PCE50203	Power cable 50 Amp	6	1
9PCE50204	Power cable 50 Amp	12	1
9PCE150203	Power cable 150 Amp	6	1
9PCE150204	Power cable 150 Amp	12	1





MMA WELDING

Manual Metal Arc (MMA) welding is valued for its versatility and is one of the most commonly used welding procedures.

MMA welding makes use of a current generator, which may be an old capacitor type or a "new" **inverter** type, to produce a low-voltage current and many amps, which are used to form a high-intensity electric arc between an electrode with a coated metal core and the metals to be joined. To weld, the right amperage must be selected, which varies according to the electrode diameter and the thickness to be welded.

The current generator has the task of powering the electric arc, present between the base material and the electrode, through the flow of a sufficient amount of current to keep it on. **Electrode welding is based on the constant current principle, or rather the current supplied from the generator must not change when the operator moves the electrode with respect to the piece.** The constructive characteristic of the source is therefore such as to keep the current unchanged in the presence of variations in the length of the arc due to the approach or removal of the electrode: the more constant the current is, the more stable the arc is, thus facilitating the work of the operator.

Special devices are found inside Oxyturbo inverter current generators to facilitate their use:

➤ The **arc force** device eases the transfer of drops of melted material from the electrode to the base material, preventing the arc from extinguishing when the drops cause contact between the electrode and the weld pool.

➤ The **hot start** device facilitates the striking of the electric arc, by supplying an overcurrent every time welding restarts.

➤ The **anti-stick** device automatically switches off the power source if the electrode sticks to the base material, thus allowing it to be removed manually without ruining the electrode holder clamp.

MMA WELDING APPLICATIONS

It is used daily by DIY enthusiasts, traders, metallurgists and metal fabricators, as well as on pipe-laying work sites.

POWER EL160 INVERTER

Fit for use in small and medium carpentry.

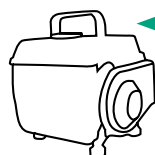


WARRANTY
2
YEARS

160 A@30% - 125 A @100%

TECHNICAL FEATURES

Supply	V	230
Max current	A	160
DC (40°C)	%	30
Regulation range	A	0-160
Power of generator	KVA	2-5
Electrodes diameter	mm	4
Weight	Kg	4
Dimensions	mm	160x290x180
Male connector dimension:	mm ²	10-25



power motor generators
2-5 KVA

Professional inverter suitable for welding all electrodes (not including cellulose and aluminium) **up to a diameter of 4** and for Tig welding with starting strip. Developed for the use on all electrodes including high efficiency electrodes. Distinctive performance value for money compared to products on the market. Equipped with an Arc Force Digital Ammeter that automatically adjusts based on the set working current, Hot Start and Anti Stick, these are used in small and medium carpentry.

➤ Suitable for use with 2-5 KVA power motor generators, taking care to always set the motor generator into operation before connecting the inverter.

Included accessories: Welding cables - Hand mask - Hammer brush - Belt for the transport - Case

CODE	Description	Weight (kg)	No.Pcs.
9SEL160	POWER EL160 INVERTER	8.00	1

Kit ground terminals and clamps of different sizes and with different connectors dimensions are available on page 67

POWER EL200 INVERTER

Fit for use in small and medium carpentry.



200 A@30% - 145 A @100%

TECHNICAL FEATURES

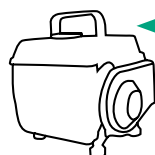
Supply	V	230
Max current	A	140
DC (40°C)	%	30
Regulation range	A	0-200
Power of generator	KVA	2-8
Electrodes diameter	mm	6
Weight	Kg	5
Dimensions	mm	160x290x180
Male connector dimension:	mm ²	10-25

Professional inverter suitable for welding all electrodes (not including cellulose and aluminium) **up to a diameter of 6 mm** and for Tig welding with starting strip. The oversized electronic components combined with supply voltage control and verification allows for constant working currents.

Equipped with an Arc Force Digital Ammeter that automatically adjusts based on the set working current, Hot Start and Anti Stick, these are used in small and medium carpentry.

➤ Suitable for use with 2-8 KVA power motor generators, taking care to always set the motor generator into operation before connecting the inverter.

Included accessories: Welding cables - Hand mask - Hammer brush - Belt for the transport - Case



power motor generators
2-8 KVA

CODE	Description	Weight (kg)	No.Pcs.
9SEL200	POWER EL 200 INVERTER	9.00	1

Kit ground terminals and clamps of different sizes and with different connectors dimensions are available on page 67



COATED ELECTRODES

Oxyturbo introduces a range of consumables with different functions according to the safety and welding operability requirements.

Coated electrodes are composed of a core and a covering:
The core consists of a conductive metal rod that has the sole function of adding material to the piece. The material of which it is composed depends on the base material to be welded. During welding, the core melts slightly before the coating. The diameter of the electrode is by convention that of the metal core.

The coating is the most important part of the electrode and performs numerous functions:

- Protect welding from air contamination
- Stabilise the arc
- Contains material that can purify the base material and elements that can contribute to the creation of alloys in the melting.



The choice of coating is therefore very important and depends on the desired welding characteristics.

BASIC ELECTRODES

ADVANTAGES

- Easy welding
- Highly resistant to cracking
- Soft arc
- Easily removable slag

Weld in all positions **except vertical downward**. Good arc stability. Suitable for the welding of highly stressed joints, suitable for groove bottom passages, for bonded assemblies and for steels up to 550 N/mm² of resistance.

WELDABLE STEELS:

Steel pipes, metallic constructions, boilers, heat-resistant steels, tempered steels.

MAIN APPLICATIONS:

Used in the construction of medium-sized carpentry, boiler-making, pipes, earth-moving machinery repairs, etc.

CODE	Diam. (mm)	Length (mm)	Intensity (Amp)	Pcs. per pack.	Pack. Weight (Kg)
9EBASI00	2.5	350	80	75	1.70
9EBASI01	3.25	450	120	50	2.20
9EBASI02	4.0	450	160	30	2.10
9EBASI03	5.0	450	220	21	2.20

Classification	ISO 2560: E 46 4 B 45 H5 - AWS A5.1: E 7018.1	
Chemical analysis of the deposit	C= 0.06 Si=0.7 Mn=1.2	
Mechanical characteristics	RESISTANCE MPA	>530
	YIELDING MPA	>460
	ELONGATION A5D	>24%
	RESILIENCE KV J	-30°C >80 -45°C >27

RUTILE ELECTRODES

ADVANTAGES

- Low cost
- Stable arc
- Good cord appearance
- Easily conserved

Weld in all positions, guarantee gentle melting and the formation of easily removable slag. Excellent cord appearance. Allow horizontal and vertical welds and thin corner welds.

WELDABLE STEELS:

Low carbon steels.

MAIN APPLICATIONS:

Suitable for metal constructions, craft works, light carpentry, tank construction and pipe welding

CODE	Diam. (mm)	Length (mm)	Intensity (Amp)	Pcs. per pack.	Pack. Weight (Kg)
9ERUT100	2.0	350	70	380	4.80
9ERUT101	2.5	350	90	240	4.60
9ERUT102	3.25	350	140	160	4.70
9ERUT103	4.0	350	180	100	4.60

Classification	ISO 2560: E 43.2 R 12 - AWS A 5.1: E 6013 - EN 499: E 38 0 RC 11	
Chemical analysis of the deposit	C<0.10 Si= 0,4 Mn= 0,6 S<0.025 P<0.025	
Mechanical characteristics	RESISTANCE MPA	510-580
	YIELDING MPA	>400
	ELONGATION A5D	>22
	RESILIENCE KV J	+20°C >70 0°C >47 -20°C >28

308L STAINLESS ELECTRODES

ADVANTAGES

- Easy welding
- Good cord appearance
- Low voltage stability
- Easily removable slag

Electrodes with rutile coating with low carbon content for welding AISI 308L type and similar stainless steels. Permits all welding position **except vertical downward**. Good weldability with low amperage, well-connected cord and excellent slagging. High resistance to corrosion in oxidising environments
Service temperature from **-196°C up to +350°C**.

WELDABLE STEELS:

Ti and Nb stabilised austenitic steels
AISI 301, 302, 304, 304L, 308 and 308L.

MAIN APPLICATIONS:

Ideal for carpentry and structural applications.

CODE	Diam. (mm)	Length (mm)	Intensity (Amp)	Pcs. per pack.	Pack. Weight (Kg)
9E308L00	1.6	300	30	210	1.60
9E308L01	2.0	300	50	145	1.80
9E308L02	2.5	300	70	100	1.80
9E308L03	3.25	350	100	55	2.00
9E308L04	4.0	350	135	35	2.00

Classification	DIN 8556: E 19 9 LR 23 AWS A 5.4: E 308L-17 EN 1600: E 19 9 LR 12	
Chemical analysis of the deposit	C=0.03 Si=0.8 Mn 0.7 Cr=18-20 Ni=9-11	
Mechanical characteristics	RESISTANCE MPA	550-620
	YIELDING MPA	370-420
	ELONGATION A5D	35
	RESILIENCE KV J	+20°C <65



309L STAINLESS ELECTRODES

ADVANTAGES

- Universal welding
- Excellent cord appearance
- High resistance
- Easily removable slag

Electrodes with rutile-basic coating for welding temperature-resistant Cr-Ni steels (**up to 1050°C**). Excellent use as a cushion layer before anti-wear refills.

WELDABLE STEELS:

Also suitable for heterogeneous unions between different composition steels such as stainless steels and non-alloy or weakly alloyed steels.

MAIN APPLICATIONS:

Repairs and maintenance of different metals, difficult to weld steel, steels whose components are not known.

CODE	Diam. (mm)	Length (mm)	Intensity (Amp)	Pcs. per pack.	Pack. Weight (Kg)
9E309L00	2.0	300	50	155	1.80
9E309L01	2.5	300	70	100	1.80
9E309L02	3.25	350	100	55	2.00
9E309L03	4.0	350	135	35	2.00

Classification	DIN 8556: E 23 12 LR 23 AWS A 5.4: E 309L-17 EN 1600: E 23 12 LR 32	
Chemical analysis of the deposit	C=0.03 Si=0.8 Mn=0.7 Cr=21-23 Ni=11-13	
Mechanical characteristics	RESISTANCE MPA	520-560
	YIELDING MPA	370-400
	ELONGATION A5D	35
	RESILIENCE KV J	+20°C >65

316L STAINLESS ELECTRODES

ADVANTAGES

- Low carbon steel
- Excellent cord appearance
- Excellent corrosion resistance
- Excellent ease of welding

Electrodes with rutile coating for welding AISI 316L type and similar stainless steels. Good weldability with low amperage, well-connected cord and excellent slagging.

Low moisture absorption coating.

Service temperature from **-120°C up to +350°C**.

WELDABLE STEELS:

Stainless steel 18/8/3 (316L) and similar.

MAIN APPLICATIONS:

Chemical industry, shipbuilding industry, heat exchangers, pipes, food industry.

CODE	Diam. (mm)	Length (mm)	Intensity (Amp)	Pcs. per pack.	Pack. Weight (Kg)
9E316L00	1.6	300	30	210	1.60
9E316L01	2.0	300	50	145	1.80
9E316L02	2.5	300	70	100	1.80
9E316L03	3.25	350	100	55	2.00
9E316L04	4.0	350	135	35	2.00

Classification	DIN 8556: E 19 12 3 LR 23 AWS A 5.4: E 316L-17 EN 1600: E 19 12 3 LR 12	
Chemical analysis of the deposit	C=0.03 Si=0.8 Mn=0.7 Cr=18-20 Ni=11-13 Mo=2.50-3.0	
Mechanical characteristics	RESISTANCE MPA	550-620
	YIELDING MPA	360-390
	ELONGATION A5D	35
	RESILIENCE KV J	+20°C >70



PPE AND ACCESSORIES FOR ELECTRIC WELDING

Oxyturbo offers a series of personal protective equipment and accessories to make your work even safer.

Legislative Decree 81/08 (so-called Consolidated Safety at Work) defines Personal Protective Equipment (PPE) as "any equipment intended to be worn and kept by the worker in order to protect him against one or more risks susceptible to threaten their safety or health during work, as well as any complement or accessory intended for this purpose".

I PPE, as individual safety devices, must be chosen as a second alternative to collective protection measures in the face of a risk, in accordance with the provisions of art. 15 of the Consolidated Law on Safety at Work and must be **CE marked**.

Oxyturbo offers a wide range of PPE for head and face protection, for conjunctival, hand and body protection, together with a series of accessories that help you make your work more efficient as well as safer.

Many PPE are articles of apparel such as clothing, headgear, gloves, footwear, glasses: in this case, the PPE is "worn". Other types of PPE must, however, be "held" in the hand, such as screens to protect the eyes and face during welding.

Art. 76 of the decree lists the requirements that must be met by PPE. In particular, they must:

- Be adequate for the risks to be prevented, without entailing a greater risk per se
- Be adapted to existing conditions in the workplace
- Take into account the ergonomic or health needs of the worker
- Being able to be adapted to the user according to his needs

In the event of multiple risks that require the simultaneous use of several PPE, these must be mutually compatible and such as to maintain, even in simultaneous use, their effectiveness against the risk and the corresponding risks.

In any case, PPE must be visually checked by the worker before they are used.

XTB-XL

ELECTRONIC MASK

For welding with great protection.

A mask with a wide front protection and which includes a filter with four photo sensors installed at eye level. The filter is transparent before welding so that the user can clearly see the work surface. When the welding arc starts, the filter darkens immediately. When the welding arc unites, the filter returns to transparent. Filter protection is adjustable from DIN 5 to DIN 9 and is operative against Infrared and Ultraviolet rays also when transparent. It also has a special position for working with grinding machines.



TECHNICAL FEATURES

- Automatic darkening
- Special filter position for use with grinding machines
- 100 x 60 mm area of vision
- Degree of light/dark protection: DIN 4 – DIN 9/13
- Degree of Infrared and Ultraviolet protection: DIN 16
- Filter time from light to dark: 1/30000 s
- Filter time from dark to light: 0.2/0.8 s
- Number of sensors: 4
- Operating temperature: from -5°C to 55°C
- Power source: solar cells

CODE	Description	Weight (kg)	No.Pcs.
9TME15	MASK XTB-XL	0.44	1

MASK XTB-XL SPARE PARTS

CODE	Description	No.Pcs.
9TME10.0027	FILTER XTB-XL MASK	1
9TME10.0029	EXTERIOR PROTECTIVE LENS XTB-XL MASK	1
9TME10.0030	INTERIOR LENS XTB-XL MASK	10
9TME10.0042	HARNESS XTB-XL MASK	1
9TME10.0043	HARNESS MOUNTING SET	1

XTB-X

ELECTRONIC MASK

For welding with excellent visibility.

A mask with an excellent optics that stays light after extended use and which includes a filter with two photo sensors installed at eye level. This filter can be darkened automatically depending on the light intensity that hits it. The filter is transparent before welding so that the user can clearly see the work surface. When the welding arc starts, the filter darkens immediately. When the welding arc unites, the filter returns to transparent.



TECHNICAL FEATURES

- Automatic adjustable darkening from DIN 9 to DIN 13
- Special filter position for use with grinding machines
- 92 x 42 mm area of vision
- Degree of light/dark protection: DIN 4 – DIN 9/13
- Degree of Infrared and Ultraviolet protection: DIN 16
- Filter time from light to dark: 1/25000 s
- Filter time from dark to light: 0.2/0.8 s
- Number of sensors: 2
- Operating temperature: from -5°C to 55°C
- Power source: solar cells



CODE	Description	Weight (kg)	No.Pcs.
9TME10	MASK XTB-X	0.43	1

MASK XTB-X SPARE PARTS

CODE	Description	No.Pcs.
9TME10.0018	FILTER XTB-X MASK	1
9TME10.0008	EXTERIOR PROTECTIVE LENS XTB-R/XTB-X MASKS	1
9TME10.0013	INTERIOR LENS XTB-X MASK	10
9TME10.0019	HARNESS XTB-X MASK	1
9TME10.0024	HARNESS MOUNTING SET	1

XTB-R

ELECTRONIC MASK

For welding with energy savings.

Nylon 801, highly resistant mask. It is equipped with an external protective lens and an internal protective lens. This filter darkens automatically depending on the light intensity that hits it. When welding begins, the filter gets darker very quickly and then returns to transparent at the end in the same way. It also has a special position for working with grinding machines: in this position, the filter is not darkened by the sparks produced by the grinding machine.



TECHNICAL FEATURES

- Automatic darkening
- Special filter position for use with grinding machines
- 92 x 35mm area of vision
- Degree of light/dark protection: DIN 4 - DIN 9/13
- Degree of Infrared and Ultraviolet protection: DIN 15
- Filter time from light to dark: 1/20000 s
- Filter time from dark to light: 0.4 s
- Operating temperature: from -5°C to 55°C
- Power source: solar cells

CODE	Description	Weight (kg)	No.Pcs.
9TME02	MASK XTB-R	0.50	1

MASK XTB-R SPARE PARTS

CODE	Description	No.Pcs.
9TME10.0053	FILTER XTB-R MASK	1
9TME10.0008	EXTERIOR PROTECTIVE LENS XTB-R/XTB-X MASKS	1
9TME10.0057	INTERIOR LENS XTB-R MASK	10
9TME10.0055	HARNESS XTB-R MASK	1
9TME10.0056	HARNESS MOUNTING SET	1

HAND MASKS IN FIBRE

Lightweight and compact masks as required by EN 175.



9TMM10/ 9TMM11



9TMM20/9TMM21



9TMM30



9TMM40/ 9TMM41

Lightweight and compact, without metallic rivets as required by EN 175. These high resistant, flat and curved compressed fibre masks have large side guards and are equipped with a quick-coupling internal handgrip. Helmet masks are also complete with face-plate. Suitable for all main welding processes. The masks most used by medium sized welders. The helmet versions are particularly suitable for more professional uses, as they guarantee maximum protection even on the sides of the face and throat.

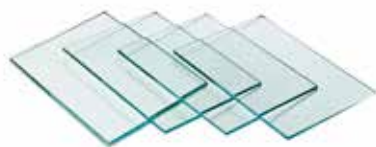
Supplied without glass. 75x98 mm or 90x110 mm glasses can be installed on them according to the chosen model.

CODE	Description	Glass dimension (mm)	Weight (Kg)	No.Pcs.
9TMM10	FLAT MASK IN FIBRE	75 X 98	0.24	1
9TMM11	FLAT MASK IN FIBRE	90 X 110	0.24	1
9TMM20	CURVED MASK IN FIBRE	75 X 98	0.29	1
9TMM21	CURVED MASK IN FIBRE	90 X 110	0.29	1
9TMM30	HELMET MASK IN FIBRE + FACE-PLATE	75 X 98	0.32	1
9TMM40	HELMET MASK IN PLASTIC + FACE-PLATE	75 X 98	0.41	1
9TMM41	HELMET MASK IN PLASTIC + FACE-PLATE	90 X 110	0.41	1

SPARE GLASS FOR FIBRE MASKS

We offer 3 different types of glass depending on welding needs, with various DIN shielding degrees.

TRANSPARENT



9TMVT000.00

CODE	Description	Glass dimension (mm)	No.Pcs.
9TMVT000	Transparent glass	75 x 98	100
9TMVT000.00	Transparent glass	90 X 110	100

ADIACTINIC

black for protection against UV (ultraviolet) and IC (infrared) rays from electric arc welding.



9TMVI011.00

CODE	Description	Glass dimension (mm)	No.Pcs.
9TMVI009	Black adiacinic glass DIN 9	75 X 98	100
9TMVI010	Black adiacinic glass DIN 10	75 X 98	100
9TMVI011	Black adiacinic glass DIN 11	75 X 98	100
9TMVI012	Black adiacinic glass DIN 12	75 X 98	100
9TMVI013	Black adiacinic glass DIN 13	75 X 98	100
9TMVI009.00	Black adiacinic glass DIN 9	90 x 110	100
9TMVI010.00	Black adiacinic glass DIN 10	90 x 110	100
9TMVI011.00	Black adiacinic glass DIN 11	90 x 110	100
9TMVI012.00	Black adiacinic glass DIN 12	90 x 110	100
9TMVI013.00	Black adiacinic glass DIN 13	90 x 110	100

MIRRORED



9TMVS011.00

CODE	Description	Glass dimension (mm)	No.Pcs.
9TMVS010	Mirrored glass DIN10	75 x 98	100
9TMVS011	Mirrored glass DIN11	75 x 98	100
9TMVS012	Mirrored glass DIN12	75 x 98	100
9TMVS013	Mirrored glass DIN13	75 x 98	100
9TMVS014	Mirrored glass DIN14	75 x 98	100
9TMVS010.00	Mirrored glass DIN10	90 x 110	100
9TMVS011.00	Mirrored glass DIN11	90 x 110	100
9TMVS012.00	Mirrored glass DIN12	90 x 110	100
9TMVS013.00	Mirrored glass DIN13	90 x 110	100
9TMVS014.00	Mirrored glass DIN14	90 x 110	100

WELDING GLASSES



A wide range of CE certified welding safety goggles to meet all needs: from do-it-yourself to the professional operator. Not bulky but light, ergonomic and comfortable to wear, they protect the eyes from annoying radiation and sparks, they allow you to keep processing under control. The presence of side guards avoids the lateral penetration of both substances and radiations. Replacement lenses are also available for some models.



100000



9M24068TT



9M24064V



9M24068TP



9M24068V

CODE	Description	Weight (Kg)	No.Pcs.
100000	Protective glassed DIN 5	0.070	1
9M24064TP	UNISTAR glasses with transparent polycarbonate lenses	0.042	10
9M24064TT	UNISTAR glasses tempered glass lenses	0.053	10
9M24064TPL	UNISTAR 2092 transparent polycarbonate lenses	-	1
9M24064TTL	UNISTAR 2092 tempered glass lenses	-	1
9M24064V	UNISTAR glasses green glass lenses DIN 5	0.053	10
9M24064VL	Green glass lenses DIN 5 UNISTAR 2092	-	1
9M24068TP	Glasses GEMINI 2080 lenses in transparent polycarbonate	0.044	10
9M24068TT	Glasses GEMINI 2081 tempered glass lenses	0.060	10
9M24068TPL	GEMINI 2080 transparent polycarbonate lenses	-	1
9M24068TTL	GEMINI 2081 tempered glass lenses	-	1
9M24068V	Glasses GEMINI 2084 green glass lenses DIN 5	0.060	10
9M24068VL	Green glass lenses DIN 5 GEMINI 2084	-	1

FACIAL SCREENS



They completely cover the head protecting the eyes, face and parts of the neck from flying materials, splashes and radiation. They can also be used together with a protective helmet or other support devices. Equipped with a double pair of lenses in which the blackout protective lenses are foldable and can be lifted without having to remove the face shield in case a few minutes pass between one weld and the next. They are in cow grain leather with a 43 mm view and DIN 5 lenses.



CODE	Description	Weight (Kg)	No.Pcs.
9M21116	Facial screen glasses lens Ø50 DIN 5 with cap	0.248	1
9M21118	Facial screen glasses lens Ø50 DIN 5 without cap	0.355	1



CAPS



They completely cover the head and some models partially or completely cover the shoulders and protect the eyes, face and parts of the neck from thrown materials, splashes and radiation. They can also be used together with a protective helmet or other support devices. They are in 100% green cotton with 340 g / m² flame fireproof treatment. They comply with EN ISO 11611 and EN ISO 11612 standards. One size fits all.

CODE	Description	No.Pcs.
9D29206	Cap 12064	5
9D29210	Cap 12066	5
9D29212	Cap 12068	5

GLOVES



They guarantee the protection of the welder's hands and arms during work thanks to the 15 cm length of the sleeve. They have excellent resistance to burns due to the leather lining and are designed to offer maximum dexterity to the wearer. The cotton interior also makes them suitable for those who have to use them for a long time without creating irritation. They comply with the EN 388 - EN 407 - EN 12477 standards.

CODE	Description	Size	No.Pcs.
9D20268	Kid flower glove	10	12
9D20133BR	Reinforced blue split glove	10	12

SLEEVES



Designed to protect the operator's forearm and elbow. They are in 100% green cotton with 340 g / m² fireproof treatment and the elastic ends ensure maximum protection and maximum safety for those who practice welding as well as guaranteeing a comfortable fit. Available in one size.

CODE	Description	No.Pcs.
9D29232	Sleeves 12070	1

JACKETS



Made of natural split leather, they guarantee advanced protection for the bust during welding operations and make them suitable to last in the most extreme environments. The front opening and adjustable cuffs make them comfortable and safe to fit.

CODE	Description	Size	No.Pcs.
9D29102(L)	Natural split jacket	L	1
9D29102(XL)	Natural split jacket	XL	1
9D29102(XXL)	Natural split jacket	XXL	1

APRONS



ANTI-OIL

NEW



9D29020.L

9D29006.L

9D29030.L

Made of high-quality leather and easy and comfortable fit. Their excellent flexibility and wear resistance make them ideal for those who use welding machines. The 60 x 90 cm dimensions protect the welder's chest and upper legs. The version with 25 X 45 cm reinforcement on the abdomen is also available.

CODE	Description	No.Pcs.
9D29020.L	Yellow cow leather apron fireproof cotton laces	15
9D29006.L	Apron natural split leather laces	10
9D29006R.L	Apron natural split leather laces + reinforcement	10
9D29030.L	Apron brown natural split leather laces	10
9D29030R.L	Apron brown natural split leather laces + reinforcement	10

PANELS



NEW



9D2453.A

9D24530.V9

Panels with 2 x 2 m metal structure that can be coupled together for multiple compositions to form welding boxes or longitudinal protections. The sheets are in PVC orange DIN 5.5 or green DIN 9 and have a dimension of (L) 2 x (H) 1.70 m with a thickness of 0.45 mm. They comply with the EN 25980 standard.

CODE	Description	No.Pcs.
9D24530.A	Panel complete with orange curtain DIN 5.5	1
9D24530.TA	Spare curtain orange DIN 5.5	1
9D24530.V9	Panel complete with green curtain DIN 9	1
9D24530.TV9	Green spare curtain DIN 9	1

KNEE PADS

NO PPE

NEW



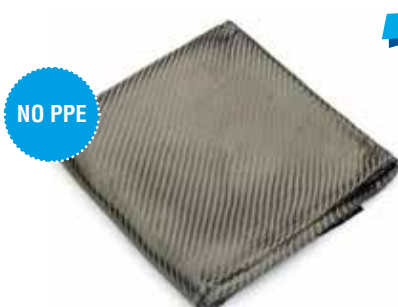
In natural split leather, they are designed to protect the knees from sharp objects and uneven surfaces allowing the welder to work with stability.

CODE	Description	No.Pcs.
9D28914	Knee pads	1

BLANKETS

NO PPE

NEW



Made of aramidic and carbon felt, they are designed to protect sensitive components during welding and brazing. They withstand high temperatures up to 1000 ° C and protect against sparks, slag, welding beads and incandescent materials. Without asbestos.

CODE	Description	Dimension (m)	No.Pcs.
9D15110802	Blanket	2 x 1	1
9D15110804	Blanket	2 x 2	1
9D15110806	Blanket	3 x 2	1



ACCESSORIES

ELECTRIC WELDING

WELDING CABLES

ACCORDING CEI 20/19 - 20/20

Highly flexible, insulated cables with excellent mechanical resistance. Available with 2 types of coating:

- PVC**, suitable for general use
- Rubber**, resistant to oils and hydrocarbons

The purity of the material, the number of capillaries and the cording pitch determine the conductive capacity of the cable. To reduce the effects of alternating current on the voltage drop, the two cables forming the welding circuit must be kept as near as possible. During operation, the welding cables must not be coiled.

PVC WELDING CABLES

Highly flexible, insulated cables with excellent mechanical resistance.



CODE	Description	Mt.
9TVACV10PVC	PVC welding cable 10 mm ²	100
9TVACV16PVC	PVC welding cable 16 mm ²	100
9TVACV25PVC	PVC welding cable 25 mm ²	100
9TVACV35PVC	PVC welding cable 35 mm ²	100
9TVACV50PVC	PVC welding cable 50 mm ²	100
9TVACV70PVC	PVC welding cable 70 mm ²	50
9TVACV95PVC	PVC welding cable 95 mm ²	50
9TVACV120PVC	PVC welding cable 120 mm ²	50

RUBBER WELDING CABLES

This version is specific for welding circuits: it offers high flexibility at low temperatures, and high resistance to heat and welding sprays.



CODE	Description	Mt.
9TVACV10GO	Rubber welding cable 10 mm ²	100
9TVACV16GO	Rubber welding cable 16 mm ²	100
9TVACV25GO	Rubber welding cable 25 mm ²	100
9TVACV35GO	Rubber welding cable 35 mm ²	100
9TVACV50GO	Rubber welding cable 50 mm ²	100
9TVACV70GO	Rubber welding cable 70 mm ²	50
9TVACV95GO	Rubber welding cable 95 mm ²	50
9TVACV120GO	Rubber welding cable 120 mm ²	50

ELECTRODE HOLDER CLAMPS

Clamps should be selected in proportion to the maximum electrode diameter to be used. The maximum amperage accepted by the clamp and the minimum diameter of the cable to be used depend on this diameter.

FCL SERIES ELECTRODE HOLDER SPRING CLAMP

Ergonomic handgrip with anti-slip notches and brass jaws. Easy to use, even at high current values. Allows you to tighten the electrodes in 9 positions.



CODE	Description	Working cycle 60% (A)	Working cycle 35% (A)	Cable mm ²	Ø electrode mm	No.Pcs.
9TEH200FCL	ELECTRODE HOLDER CLAMP FCL 2	150	200	25	MAX 3.2	1
9TEH300FCL	ELECTRODE HOLDER CLAMP FCL 3	200	300	35	MAX 4.0	1
9TEH400FCL	ELECTRODE HOLDER CLAMP FCL 4	300	400	50	MAX 5.0	1
9TEH600FCL	ELECTRODE HOLDER CLAMP FCL 6	500	600	70	MAX 6.3	1

GROUND TERMINALS

Ground terminals are essential accessories for good welding. It is the ground terminals that ground the piece and allow welding arc formation. Oxyturbo offers a wide range of ground terminals to meet the various needs of different fields of use. To choose which terminal to use, check the maximum amperage used and the type of contact. For light works, a **CC** or **NT** terminal can be used, while **SC** or **CMP** or **Verona** series terminals are preferable for heavy or intense works.

Terminals with clamp or screw fixing are available



CC SERIES TERMINAL

Clamp ground terminal with galvanised steel body. Cable clamping is carried out by means of a coupling with the wire terminal on the nut in question.

CODE	Description	Working cycle 60% (A)	Working cycle 35% (A)	Cable mm ²	No.Pcs.
9TEC200CC	CLAMP GROUND TERMINAL CC 200	150	200	25	1
9TEC400CC	CLAMP GROUND TERMINAL CC 400	300	400	70	1
9TEC600CC	CLAMP GROUND TERMINAL CC 600	500	600	95	1

NT SERIES TERMINAL

Clamp ground terminal with galvanised steel body. Cable clamping is performed by means of a plate with screws.



CODE	Description	Working cycle 60% (A)	Working cycle 35% (A)	Cable mm ²	No.Pcs.
9TEC200NT	CLAMP GROUND TERMINAL NT 200	200	250	35	1
9TEC350NT	CLAMP GROUND TERMINAL NT 350	300	400	50	1
9TEC500NT	CLAMP GROUND TERMINAL NT 500	400	500	95	1
9TEC650NT	CLAMP GROUND TERMINAL NT 650	500	600	120	1

SC SERIES TERMINAL

Die-cast brass clamp ground terminal. Cable clamping is obtained with brass screws at the back of the terminal near the area of contact. For large sized welders, designed for professional use.



CODE	Description	Working cycle 60% (A)	Working cycle 35% (A)	Cable mm ²	No.Pcs.
9TGC300SC	CLAMP GROUND TERMINAL SC 300	300	400	70	1
9TGC500SC	CLAMP GROUND TERMINAL SC 500	500	600	95	1

VERONA SERIES TERMINAL

Die-cast brass clamp ground terminal with copper foil for a better conductivity. Ideal for professional uses.



CODE	Description	Working cycle 60% (A)	Working cycle 35% (A)	Cable mm ²	No.Pcs.
9T50054	CLAMP GROUND TERMINAL VERONA 400	400	400	50-70	1
9T50056	CLAMP GROUND TERMINAL VERONA 600	500	600	70-95	1

CMP SERIES TERMINAL

Ground terminals with wide locking opening, die-cast brass alloy body, locks with steel screws. Indicated for heavy duty use with high amperage and where a fixed contact is required.



CODE	Description	Working cycle 60% (A)	Working cycle 35% (A)	Cable mm ²	No.Pcs.
9TGC500-CMP	GROUND TERMINAL CMP 500	400	500	95	1
9TGC800-CMP	GROUND TERMINAL CMP 800	600	800	120	1

ST SERIES TERMINAL

Screw mass terminal composed of a nickel-plated steel jaw and a die-cast brass jaw. Equipped with a release spring to facilitate opening and a rubber knob. Cable clamping is carried out by means of an Allen screw. Particularly suitable for uses where placing and removing the ground cable is not necessary.



CODE	Description	Working cycle 60% (A)	Working cycle 35% (A)	Cable mm ²	No. Pcs.
9TGC600ST-BS	GROUND TERMINAL ST 600 BRASS	500	600	95	1

KIT GROUND TERMINAL AND CLAMP



Kit composed of connector, cable and electrode holder spring clamp or ground terminal. It can be used with electric welding machines with different connector dimensions.

CODE	Description	Male connector	Cable length (m)	Cable mm ²	No.Pcs.
9S53312.04	ELECTRODE HOLDER SPRING CLAMP KIT	10-25	4	25	1
9S53312.05	ELECTRODE HOLDER SPRING CLAMP KIT	10-25	5	25	1
9S53312.06	ELECTRODE HOLDER SPRING CLAMP KIT	10-25	6	25	1
9S53336.04	ELECTRODE HOLDER SPRING CLAMP KIT	35-50	4	35	1
9S53336.05	ELECTRODE HOLDER SPRING CLAMP KIT	35-50	5	35	1
9S53336.06	ELECTRODE HOLDER SPRING CLAMP KIT	35-50	6	35	1
9S53322.04	ELECTRODE HOLDER SPRING CLAMP KIT	35-50	4	50	1
9S53322.05	ELECTRODE HOLDER SPRING CLAMP KIT	35-50	5	50	1
9S53322.06	ELECTRODE HOLDER SPRING CLAMP KIT	35-50	6	50	1
9S53022.04	GROUND TERMINAL KIT	10-25	4	25	1
9S53032.04	GROUND TERMINAL KIT	35-50	4	25	1
9S53084.04	GROUND TERMINAL KIT	35-50	4	50	1

CONNECTORS

MALE PUSH-PULL CONNECTOR

Mobile plug for connecting the ground cable and clamp to welding systems. Brass body and rubber heat-resistant knob. Cable clamping is carried out with an Allen grub screw. **Sold in 2 pcs. packaging.**



CODE	Description	Working cycle 60% (A)	Working cycle 35% (A)	Cable mm ²	No. Pcs.
9TCC-10-25-P	MALE PLUG 10-25	200	250	25	2
9TCC-35-50-P	MALE PLUG 35-50	300	400	50	2
9TCC-50-70-P	MALE PLUG 50-70	400	500	70	2
9TCC-70-95-P-DH	MALE PLUG 70-95 DH	500	600	95	2

FEMALE PUSH-PULL CONNECTOR

Mobile socket for connecting the ground cable and clamp to welding systems. Brass body and rubber heat-resistant knob. Cable clamping is carried out with an Allen grub screw. **Sold in 2 pcs. packaging.**



CODE	Description	Working cycle 60% (A)	Working cycle 35% (A)	Cable mm ²	No. Pcs.
9TCC-10-25-S	FEMALE SOCKET 10-25	200	250	25	2
9TCC-35-50-S	FEMALE SOCKET 35-50	300	400	50	2
9TCC-50-70-S	FEMALE SOCKET 50-70	400	500	70	2
9TCC-70-95-S-DH	FEMALE SOCKET 70-95 DH	500	600	95	2

MALE PANEL CONNECTOR

Special plug for panel adapter of the ground cable and clamp to welding circuits. Brass body. Cable clamping is carried out by means of a hex screw.



CODE	Description	Working cycle 60% (A)	Working cycle 35% (A)	Cable mm ²	No. Pcs.
9TCC-10-25-PP	MALE PANEL PLUG 10-25	200	250	25	1
9TCC-35-50-PP	MALE PANEL PLUG 35-50	300	400	50	1
9TCC-70-95-PP	MALE PANEL PLUG 70-95	500	600	95	1

FEMALE PANEL CONNECTOR

Special plug for panel adapter of the ground cable and clamp to welding circuits. Brass body. Cable clamping is carried out by means of a hex screw.



CODE	Description	Working cycle 60% (A)	Working cycle 35% (A)	Cable mm ²	No. Pcs.
9TCC-10-25-PS	FEMALE PANEL SOCKET 10-25	200	250	25	1
9TCC-35-50-PS	FEMALE PANEL SOCKET 35-50	300	400	50	1
9TCC-70-95-PS	FEMALE PANEL SOCKET 70-95	500	600	95	1



WELDING SPRAY

The very best welding aid.

SPRAY-SUPPRESSION FOR WELDING



A product specifically designed as a spray-suppression agent for autogenous, electric and inert gas welding. Its main feature is that it does not contain silicone substances that might interfere with any painting operations after welding. Prevents sparks and the formation of drops that would otherwise have to be removed later before proceeding with other treatments, as they spoil the aesthetics of the product. Prevents the formation of oxides and any corrosion by chemical agents and keeps welding torches perfectly clean both externally and internally.

CODE	Description	Weight (Kg)	No. pcs.	Pack. Dim. (cm)	Pack. Weight (kg)
9TAS0010	400 ml SPRAY-SUPPRESSION	0.35	12	27 x 22 x 22	4.30

GALVANISING SPRAY



Synthetic type resin-based cold galvanising spray. Ideal for protecting all metal surfaces exposed to weathering from oxidation. Forms a uniform, resistant layer on the affected surface that can then be painted or left "in view". Ideal for retouching where a semi-glossy light grey finish is required.

CODE	Description	Weight (Kg)	No. pcs.	Pack. Dim. (cm)	Pack. Weight (kg)
9TAS0030	400 ml LIGHT ZINC	0.40	12	27 x 22 x 22	4.90

7 FUNCTION LUBRICANT UNBLOCKING



A product you should always have on hand. Its 7 functions (unlocking, protecting, lubricating, penetrating, degreasing, anti-corrosion and resistance to high temperatures) and its 360° dispensing valve make it perfectly suitable in workshops, at home, in garages, in the garden and wherever you can find mechanisms requiring maintenance.

CODE	Description	Weight (Kg)	No. pcs.	Pack. Dim. (cm)	Pack. Weight (kg)
9TAS0020	400 ml LUBRICANT UNBLOCKING	0.39	12	27 x 22 x 22	4.80

CRACK DETECTORS



A series of products that allow you to easily and precisely identify any welding or moulding defects, cracks, fusion defects, and open cavities on welded parts. These devices allow for non-destructive testing of surface quality and compliance. You must first thoroughly clean and degrease the surfaces in question with a cleaner, then apply a red penetrant and then let sit for approximately 20 minutes. Remove excess liquid, dry and spray a layer of the white detector: after a few moments, any surface defects will be clearly and unambiguously highlighted.

CODE	Description	Weight (Kg)	No. pcs.	Pack. Dim. (cm)	Pack. Weight (kg)
9TAS0000	400 ml CLEANER	0.37	12	27 x 22 x 22	4.60
9TAS0001	400 ml RED PENETRANT	0.39	12	27 x 22 x 22	4.80
9TAS0002	400 ml WHITE DETECTOR	0.40	12	27 x 22 x 22	4.90



GAS LEAK AND ESCAPE DETECTOR
FOR YOUR SAFETY

THERE IS AN ENTIRE COMPANY IN EVERY OXYTURBO PRODUCT

The three warehouses in Desenzano house 4 pressure reducer assembly lines and 2 welding product assembly lines within the 3000 square metres of operating area. It produces significant production capacity from each assembly line, with a very high annual potential. Capability that of course is further enhanced by the other products in the Oxyturbo and Welding Diffusion range, which are also tested, packaged and marketed from the headquarters in Desenzano.

Z1800054 Rev.2







oxyturbo®

Gas in Action

OXYTURBO SpA

Via Serio, 15 - 25015 Desenzano del Garda (BS) - Italy
Tel. +39 030-9911855 Fax +39 030-9911271

www.oxyturbo.it

info@oxyturbo.it